



CARD FRAMES FOR PROTOTYPES

MINIMAL

MONTH 02 | INSTRUCTION MANUAL

UTILIZATION LICENSE

By acquiring and/or downloading this digital template you agree to and accept the following licensing conditions:

1. You are granted an ongoing, non-exclusive, Earth-wide and universal license to utilize this digital template.
2. You agree not to sell, the digital template; in its entirety and/or as separate parts/ files. This applies Earth-wide and universally.
3. This digital template is for your private use only. This license maintains that the downloader/acquirer be held legally accountable for any and all violations of this license.
4. You agree to restrict the utilization of this digital template to the creation of any number of prototypes (physical prints and/or digital files) designed for play-testing and/or presentation purposes.
5. You agree not to sell any prototypes (physical prints and/or digital files) with or without layer information, or editable design elements derived from this digital template.
6. You agree not to utilize this digital template to create any final end products/ creations (physical prints and/or digital files with or without layer information, or

editable design elements) for personal use, business use and/or client use.

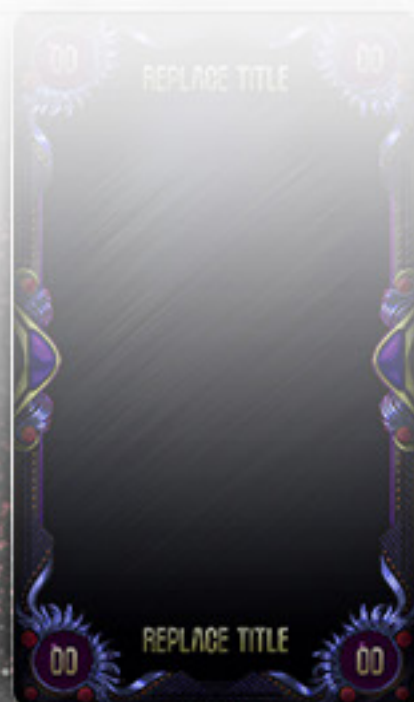
7. You are free to edit, change, modify and/or manipulate this digital template for your private use.
8. Any derivative works created through any utilization of this digital template (in physical or digital formats) containing layer information and/or editable design elements may not be sold, distributed, or made publicly available.
9. You are not permitted to sell, distribute, or make publicly available any works, goods, templates, bundles, file combinations, stock, tools or source files that include this digital template (as a whole or in part) as a physical print and/or as digital files containing layer information and/or editable design elements.
10. Selling, distributing, or making publicly available any single, or multiple editable design element(s) (altered or unaltered) originated from this digital template is strictly prohibited.
11. This license can be terminated if any of its terms/conditions are breeched.

The author/creator of this digital template(Unknown Depths)maintains all ownership and rights to this digital template and provides this digital template to downloaders/ users upon agreement and acceptance of the conditions of this license.



CLICK THIS PAGE TO ASSIST CARD PROJECT DESIGNERS BY SUPPORTING
MANIFESTATION CCS' MONTHLY CARD FRAMES FOR PROTOTYPES ON PATREON

[HTTPS://WWW.PATREON.COM/MANIFESTATIONCCS](https://www.patreon.com/manifestationccs)



MANIFESTATION CCS

PATREON



CARD

03

CONTENTS

1) UTILIZATION LICENSE.txt

2) Card 06 - Instruction Manual.pdf

Card 06 - Minimal (Tarot) Photoshop

3) Card 06 (Tarot) Front.psd

4) Card 06 (Tarot) Rear.psd

5) Card 06 (Tarot) Minimal.xlsx

6) Card 06 (Tarot) Minimal.txt

Artwork

7) Artwork.psd

8) Artwork00.jpg

Icons

9) Icons.psd

10) Icons00.png

Card 06 - Minimal (Tarot) Gimp

11) Card 06 (Tarot) Front.xcf

12) Card 06 (Tarot) Rear.xcf

Artwork

13) Artwork.xcf

14) Artwork00.jpg

Icons

15) Icon.xcf

16) Icon00.png

T A B L E O F C O N T E N T S

PHOTOSHOP VERSION

GIMP VERSION

SPREADSHEETS&CARD CONTENT...02 TEXT ELEMENTS.....09

TEXT ELEMENTS.....04 ICON ELEMENTS.....14

ICON ELEMENTS.....06 ARTWORK.....15

ARTWORK.....07 SUPPORTERS.....16

PHOTOSHOP VERSION



SPREADSHEETS & CARD CONTENT

The Photoshop version of this card template leverages the power of Photoshop's Data Sets and Variables. This means that certain elements of the card template can be changed by inputting your desired information into the provided spreadsheet, saving the spreadsheet as a Tab Delimited .txt file, and then importing that Tab Delimited .txt file into Photoshop. Multiple versions of the card can be created by inputting data into the provided spreadsheet. **Using the spreadsheet is the fastest and most organized way to build a deck of cards with this template.**

For detailed information on how to create a deck of cards in which each card consists of different information and artwork, visit the link below to download our .pdf tutorial on Photoshop Data Sets and Variables. You'll want to open Tutorial 01 – Intuitive.pdf and read through Focus 03: Create Data Sets (pages 7-9) and Focus 04: Import Data Sets (pages 10-14).

TUTORIAL DOWNLOAD PAGE: <https://manifestationccs.com/tutorials/01-photoshop-variables-data-sets/>

If you have any questions about this card template feature, feel free to contact us through our [CONTACT](#) page.

To see this card's Data Sets and Variables in action: 1) Go to Image > Apply Data Set, 2) Select the example Data Set in the popup window (tick/check "Preview").

SPREADSHEETS & CARD CONTENT

SPREADSHEET COLUMN TO PHOTOSHOP LAYER CORRELATION (SPREADSHEET COLUMN | PHOTOSHOP LAYER)

Title | Text > Title

- Use to edit text.

Icon01 Vis | Icons/Text > Icon Placeholder 01

- True = Icon Visible | False = Icon Hidden

Icon01 | Icons/Text > Icon Placeholder 01

- Path to icon graphic.

Icon02 Vis | Icons/Text > Icon Placeholder 02

- True = Icon Visible | False = Icon Hidden

Icon02 | Icons/Text > Icon Placeholder 02

- Path to icon graphic.

Icon03 Vis | Icons/Text > Icon Placeholder 03

- True = Icon Visible | False = Icon Hidden

Icon03 | Icons/Text > Icon Placeholder 03

- Path to icon graphic.

Text01 Vis | Icons/Text > Text Placeholder 01

- True = Text Visible | False = Text Hidden

Text01 | Icons/Text > Text Placeholder 01

- Use to edit text.

Text02 Vis | Icons/Text > Text Placeholder 02

- True = Text Visible | False = Text Hidden

Text02 | Icons/Text > Text Placeholder 02

- Use to edit text.

Text03 Vis | Icons/Text > Text Placeholder 03

- True = Text Visible | False = Text Hidden

Text03 | Icons/Text > Text Placeholder 03

- Use to edit text.

Artwork | Artwork > Artwork Placeholder

- Path to card artwork.

TEXT ELEMENTS

CARD FRONT

- The Title text layer is located in the Text layer group. All text positioned in icon areas are named 'Text Placeholder ##' and located in the Icons/Text layer group.
- All text layers have been defined as Photoshop Variables and as such can be edited by using the provided spreadsheet

CARD REAR

- Creating a new text layer and typing in your desired text within the "Logo/Symbol (1 Color/Transparency)" layer group will result in the provided layer style/effect being applied to your text.

TEXT ELEMENTS

FONTS

- SF Gothican Bold: <http://www.dafont.com/sf-gothican.font>

ICON ELEMENTS

CARD FRONT

- Icon Placeholders 01, 02, and 03 are located in the Icons/Text layer group. All Icon Placeholder layers have layer styles applied to them designed to work with flat, single color icons containing transparency information.
- All icon layers have been defined as Photoshop Variables and as such can be edited by using the provided spreadsheet.
- Use the provided "Icon.psd" file to size your icons to the right proportions if needed.

CARD REAR

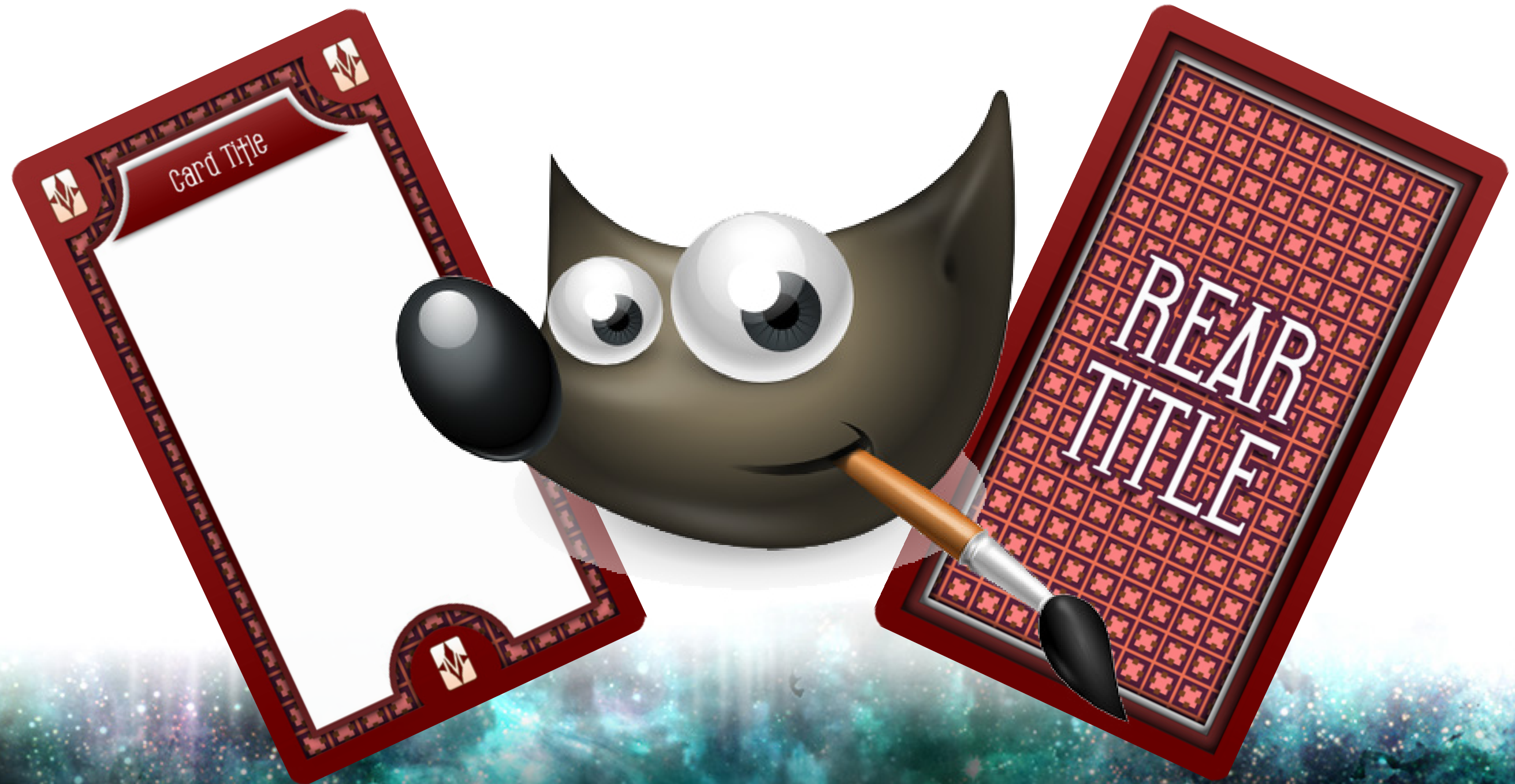
- Placing a flat, single color, symbol with transparency in the "Logo/Symbol (1 Color/Transparency)" layer group will result in the provided layer style/effect being applied to graphic you placed.

ARTWORK

CARD FRONT

- Inside of the Artwork layer group is the "Artwork Placeholder." The Artwork Placeholder layer consists of two 1 pixel dots positioned at the upper left and lower right corners of an invisible rectangle. This layer has been defined as a Photoshop Variable and as such can be edited by using the provided spreadsheet.
- Artwork created for this template should be sized at 638x1235 (WxH) pixels. Use the provided "Artwork.psd" file to size your artwork to the right proportions if needed.
- If not using the provided spreadsheet to incorporate artwork, make sure that any placed artwork uses a clipping mask linked to the "Artwork Area" layer. Create a clipping mask by selecting your artwork layer and pressing "Alt+Ctrl+G" on a PC or "Option+Apple+G" on a Mac. Artwork not masked by the "Artwork Area" layer underneath it will cover "Borders" and "Background" layer group elements.

GIMP VERSION



TEXT ELEMENTS

CARD FRONT

- The Title text layer is located in the Text layer group. All text positioned in icon areas are named 'Text Placeholder ##' and located in the Icons/Text layer group.
- Text in this template was designed to be viewed with a Gradient and Drop Shadow. You will need the GIMP plugin "ScriptFu" to add the Gradient and Drop Shadow effects to text layers.
- Gradient: First select the layer to apply the gradient to. Second, change the foreground color to #c6b66a and the background color to #ffffff. Go to the "ScriptFu" menu option and select Layer Effects > Gradient Overlay. A ScriptFu Gradient Overlay options window opens. Click on the Gradient color spectrum and select "FG to BG (RGB)." Close the window. The color spectrum is now updated to the foreground and background colors you selected earlier. Make sure the options are set to the following:
 - o Gradient Type: Linear
 - o Repeat: None

T E X T E L E M E N T S

- Opacity: 100
 - Blending Mode: Normal
 - Center X & Y: 0
 - Gradient Angle 90
 - Gradient Width: 10
 - Make sure "Reverse" and "Merge with layer" are both unticked/unchecked and click OK.
- Drop Shadow: Go to the "ScriptFu" menu option and select Layer Effects > Drop Shadow. A ScriptFu Drop Shadow options window opens. Make sure the options are set to the following:
- Color: #000000
 - Opacity: 38
 - Contour: Linear
 - Noise: 0
 - Blending Mode: Normal
 - Spread: 0

TEXT ELEMENTS

- o Size: 2
- o Offset Angle: 90
- o Offset Distance: 1
- o Untick/Uncheck the "Layer knocks out Drop Shadow" and "Merge with layer" options.

CARD REAR

- The "Title" text layer is located in the "Logo/Symbol (w/ Transparency)" layer group. Replace the default text with your own.
- Text and symbols in this template were designed to be viewed with a Stroke and Drop Shadow. You will need the GIMP plugin "ScriptFu" to add the Stroke and Drop Shadow effects to text and logo/symbol layers.
- Stroke: Go to the "ScriptFu" menu option and select Layer Effects > Stroke. A ScriptFu Stroke options window opens. Make sure the options are set to the following:

TEXT ELEMENTS

- o Color: # 57203b
 - o Opacity: 100
 - o Blending Mode: Normal
 - o Size: 22
 - o Position: 50
 - o Untick/Uncheck the "Merge with layer" option.
- Drop Shadow: Go to the "ScriptFu" menu option and select Layer Effects > Drop Shadow. A ScriptFu Drop Shadow options window opens. Make sure the options are set to the following:
 - o Color: #000000
 - o Opacity: 75
 - o Contour: Linear
 - o Noise: 0
 - o Blending Mode: Normal
 - o Spread: 0

TEXT ELEMENTS

- o Size: 19
- o Offset Angle: 90
- o Offset Distance: 16
- o Untick/Uncheck the "Layer knocks out Drop Shadow" and "Merge with layer" options.

FONTS

- SF Gothic Bold: <http://www.dafont.com/sf-gothican.font>

ICON ELEMENTS

CARD FRONT

- In the "Icons/Text" layer group are "Icon Placeholder ##" and "Icon/Text Area ##" layers. Icon Placeholder ## layers are provided to give an example of correct sizing and positioning of icons within the template. Icon/Text Area ## layers are hidden by default. Making them visible reveals a transparent white box. Use these to size and position icons you wish to include in the template.
- Icons created for this template should be sized at: 108x108 pixels. Use the provided "Icon.xcf" file to size your icons to the right proportions if needed.
- Icons created for "Icon(Placeholder)" layers in "Icon/Text Area 01, 02, and 03" layer groups work best with the template elements when transformed /skewed to perspectives matching "Area Over" and "Area Under" layer perspectives.

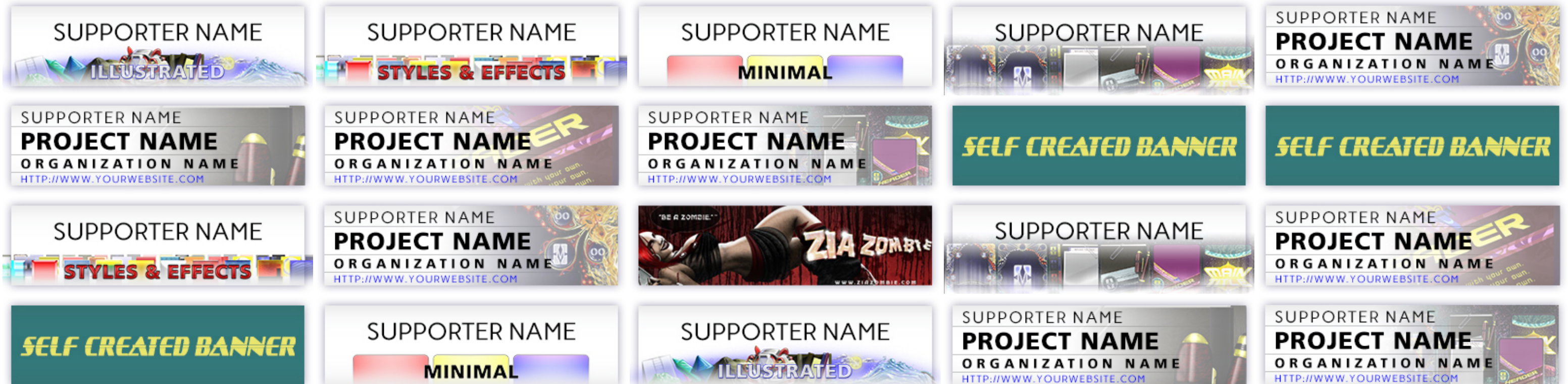
ARTWORK

CARD FRONT

- Artwork created for this template should be sized to 638x1235 (WxH) pixels.
- The "Artwork" layer group contains the "Artwork (Placeholder)" and "Artwork Area" layers. To add artwork to the template, open your artwork as a layer (Ctrl+Alt+O) over the "Artwork Area" layer. Right-click on the "Artwork Area" layer and select "Alpha to Selection." Right-click on your artwork's layer and select "Add Layer Mask." Make sure the "Selection" option is ticked/checked and then click the "Add" button. Your artwork is now properly masked into the card template design.

S U P P O R T E R S

GET YOUR NAME OR PROJECT, ORGANIZATION, AND/OR WEBSITE INCLUDED IN NEXT MONTH'S SUPPORTERS' PAGE BY CONTRIBUTING TO OUR MONTHLY CARD FRAMES FOR PROTOTYPES INITIATIVE.





HAVE AN IDEA FOR A CARD FRAME? CLICK HERE TO SEND US YOUR SUGGESTION.



ANIFESTATION
CARD CREATION SOURCE

CARD FRAMES FOR PROTOTYPES

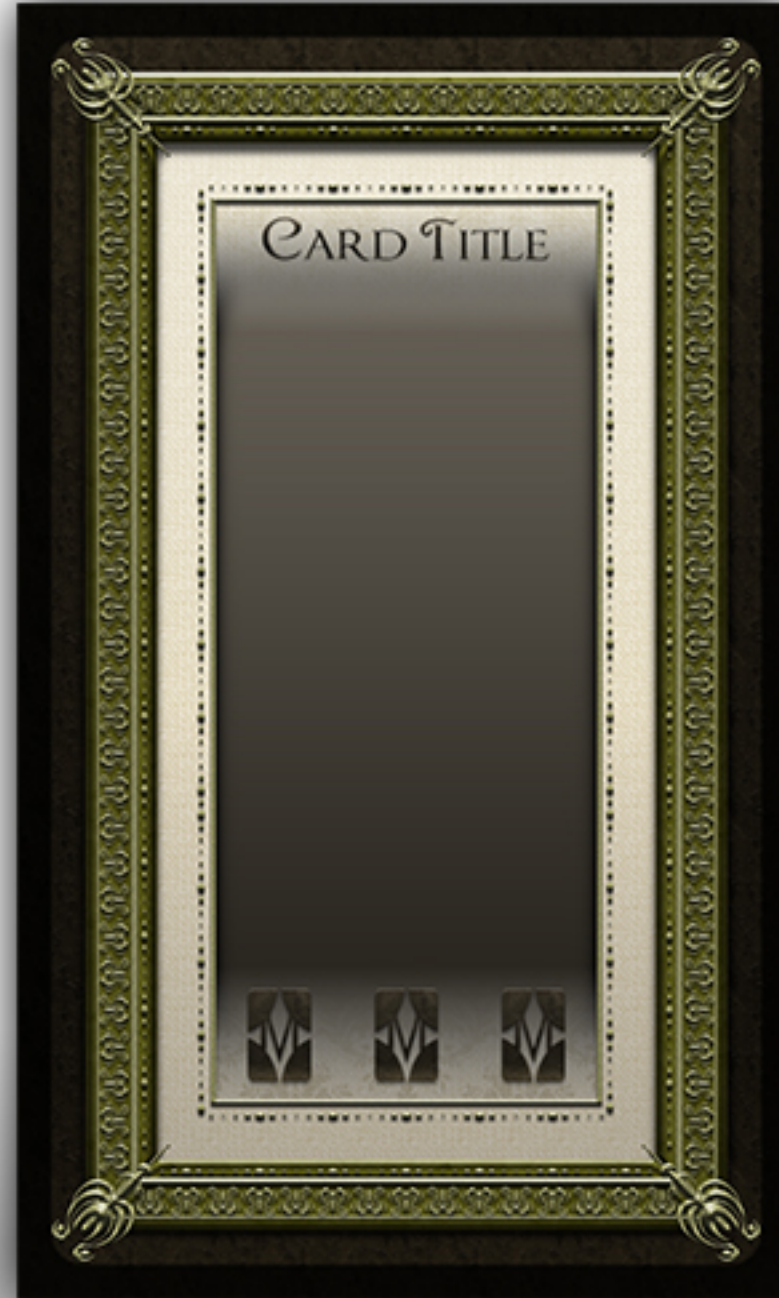
10 DAY MICRO CROWD-FUNDING CAMPAIGNS

3 NEW GIMP & PHOTOSHOP TEMPLATES PER MONTH

MONTH 03 | CARD FRAMES FOR PROTOTYPES



ILLUSTRATED | FUTURE AGE



STYLES & EFFECTS | TAROT



MINIMAL | PAST AGE



MANIFESTATION

CARD GAME PRINTERS

<https://manifestationccs.com/printers/>

PRINT BUSINESSES | PLAY-TESTING SPOTS | CARD GAME TEMPLATES

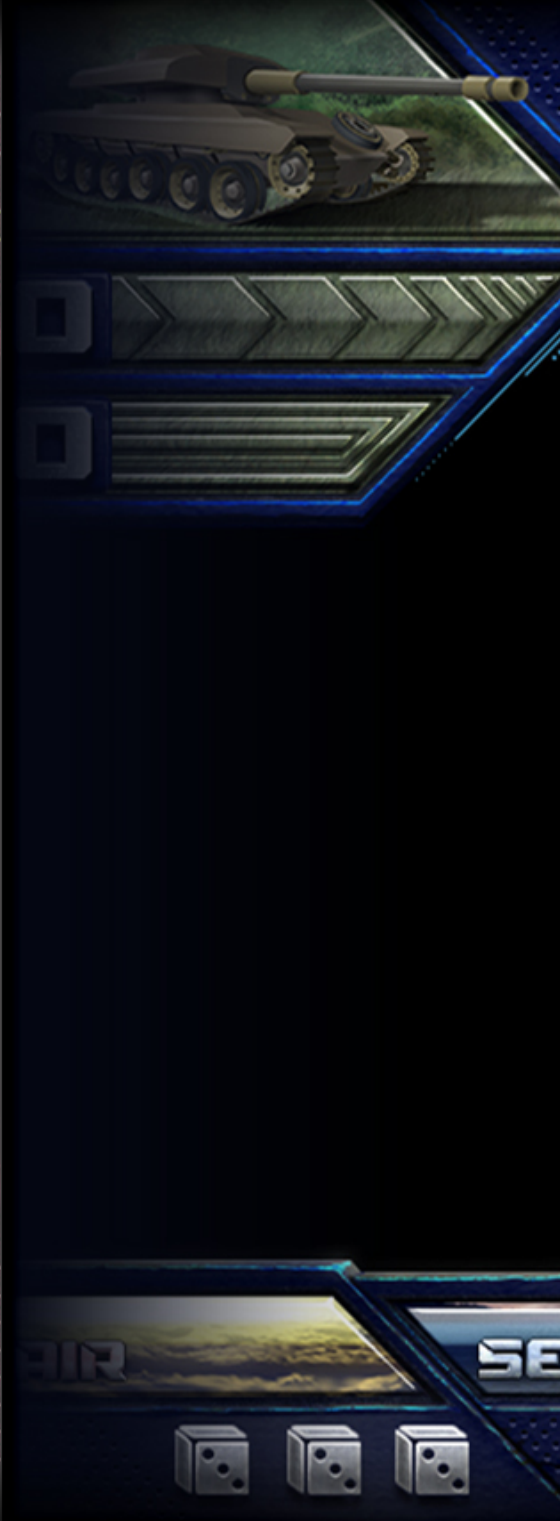
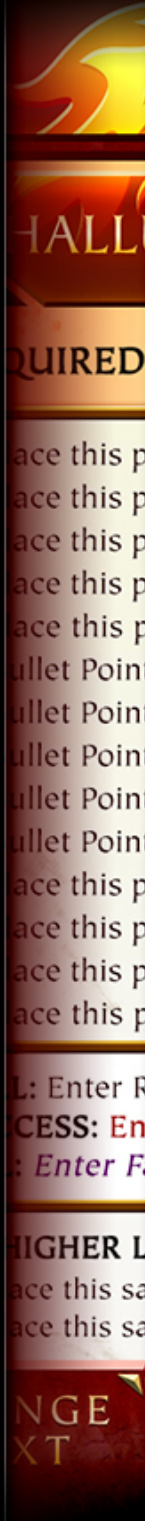


A N I F E S T A T I O N C C S

ILLUSTRATIONS



CARD DESIGNS



ICONS



D E S I G N S E R V I C E S

[HTTP://WWW.MANIFESTATIONCCS.COM/DESIGN-SERVICES/](http://www.manifestationccs.com/design-services/)



MANIFESTATION

CARD CREATION SOURCE



PAST AGE

STYLE SERIES I

60
ICONS

DETAILED
INSTRUCTION
MANUAL



COMPLETE

.PSD | .ASL | .ATN | .PNG | .PDF



WWW.MANIFESTATIONCCS.COM

CARD FRONT
AND REAR

18
EDITABLE
TEMPLATES



ANIFESTATION
CARD CREATION SOURCE



160
ICONS

DETAILED INSTRUCTION MANUALS



CS4
CS5
CS6

C O M P L E T E

.PSD | .ASL | .ATN | .PNG | .PDF

PHOTOSHOP
CS6
RECOMMENDED

[HTTP://WWW.MANIFESTATIONCCS.COM](http://www.manifestationccs.com)

18

EDITABLE
TEMPLATES

CARD FRONT AND REAR



90
ICONS



CARD
FRONT &
REAR

DETAILED
INSTRUCTION
MANUAL

COMPLETE

Ps CS4 CS5 CS6 .PSD | .ASL | .ATN | .PNG | .PDF PHOTOSHOP CS6 RECOMMENDED

WWW.MANIFESTATIONCCS.COM

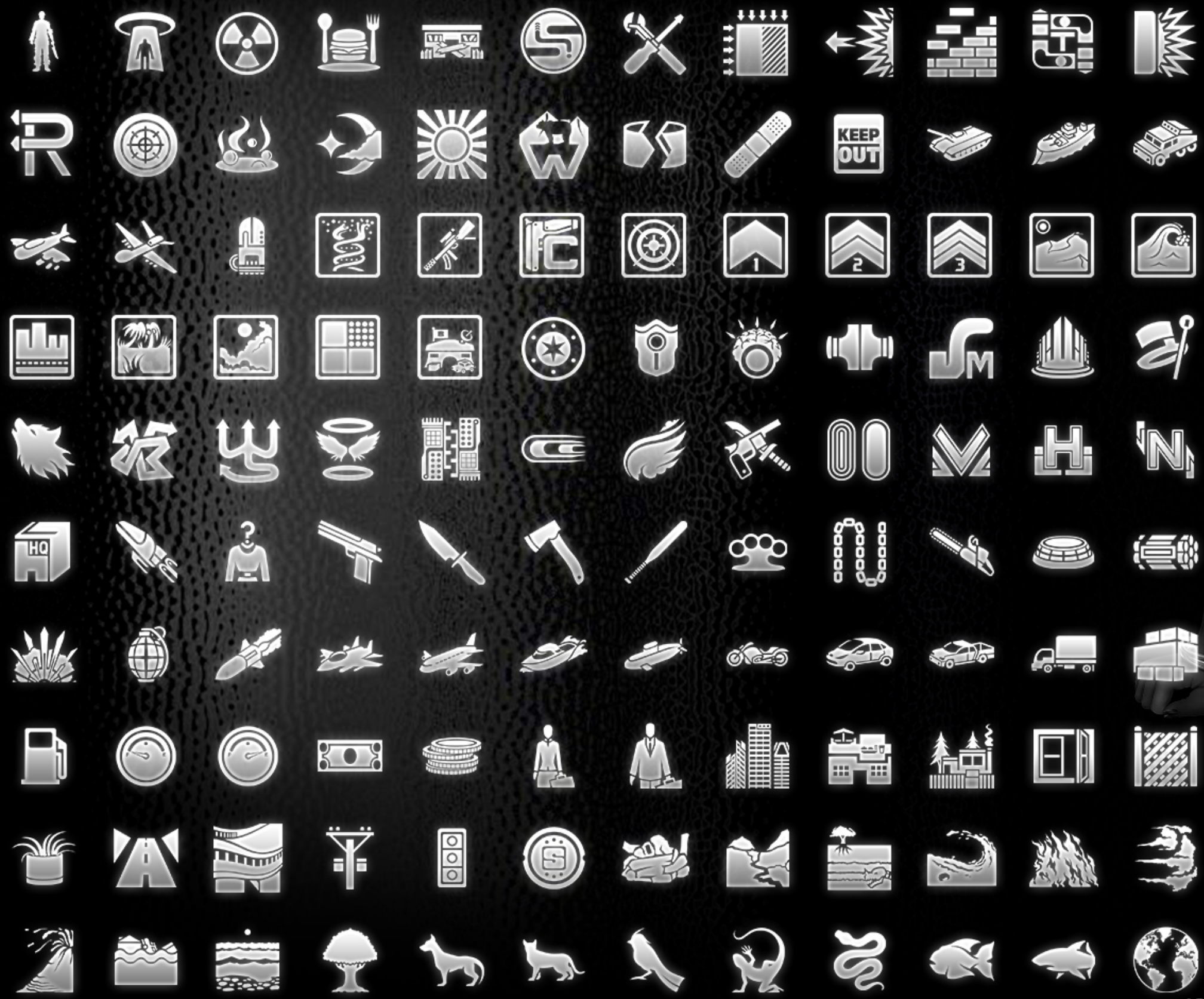
18
EDITABLE
TEMPLATES



PAST AGE
ICON SERIES 1

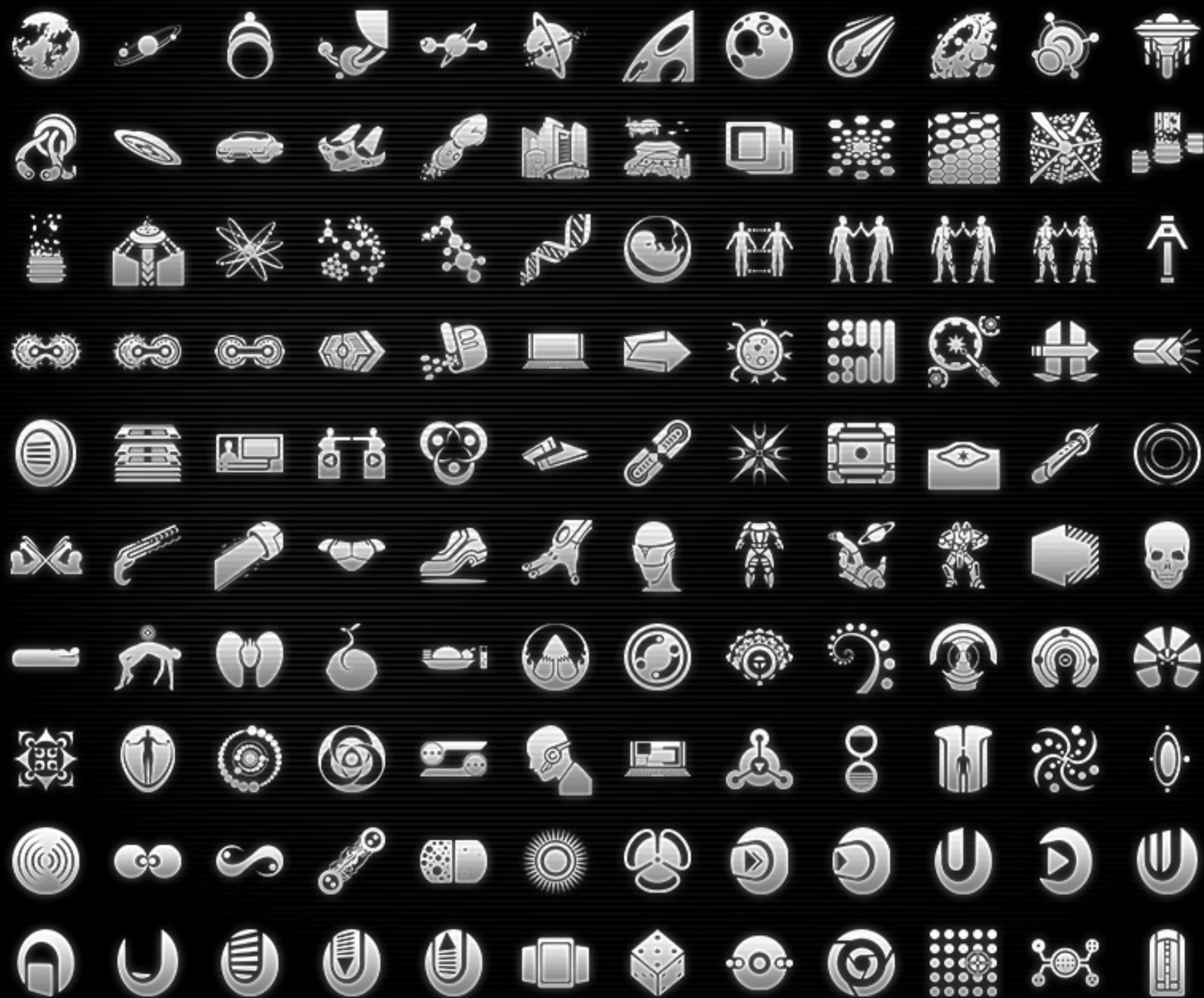
120 FANTASY THEMED VECTOR ICONS IN .SVG | .PNG | .PSD FORMATS

WWW.MANIFESTATIONCCS.COM/ICON-LIBRARY



183 CURRENT-ERA THEMED VECTOR ICONS IN .SVG | .PNG | .PSD FORMATS

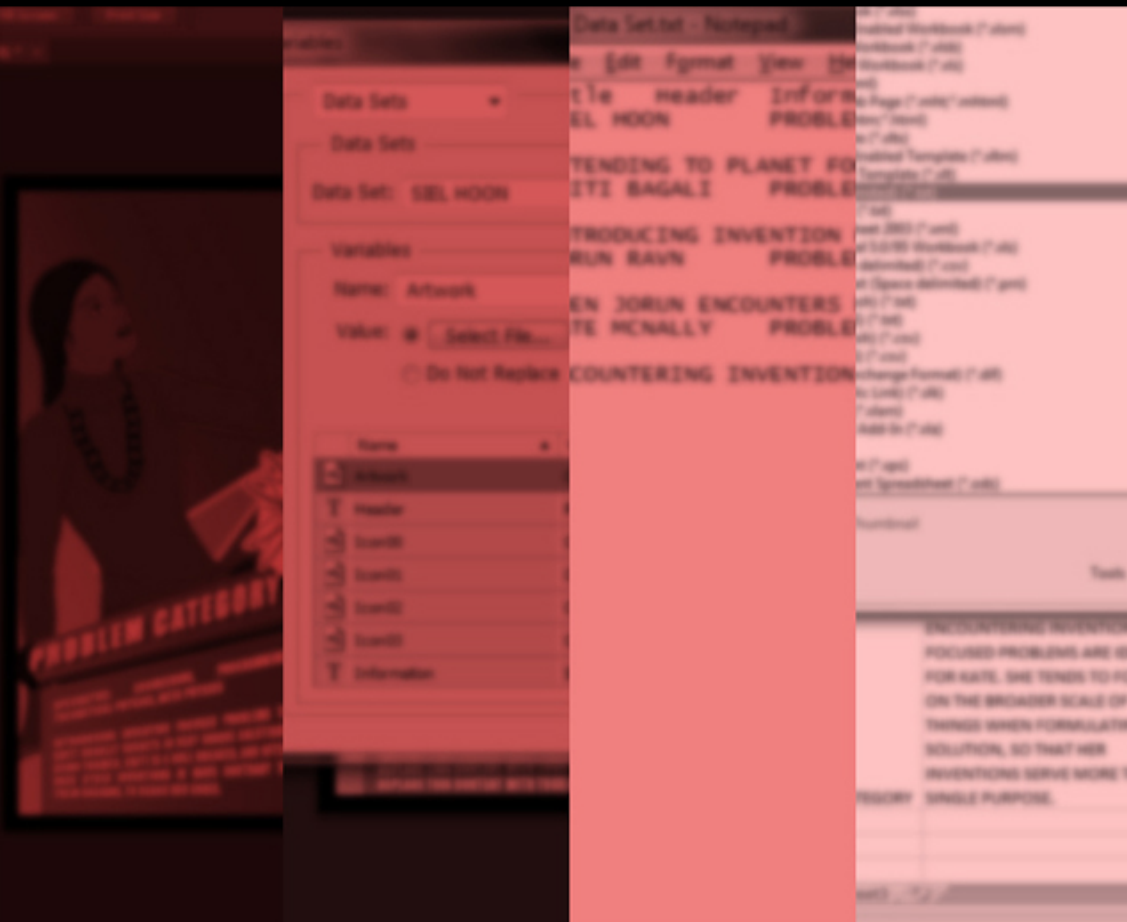
WWW.MANIFESTATIONCCS.COM/ICON-LIBRARY



120 SCI-FI THEMED VECTOR ICONS IN .SVG | .PNG | .PSD FORMATS

WWW.MANIFESTATIONCCS.COM/ICON-LIBRARY

LEARN HOW TO CREATE CARD GAME TEMPLATES



TUTORIAL 01: PHOTOSHOP
MANAGING CARD ELEMENTS
USING VARIABLES & DATA SETS



TUTORIAL 02: PHOTOSHOP
DESIGNING CARD ELEMENTS
USING VECTOR SHAPE LAYERS



TUTORIAL 03: PHOTOSHOP
CREATING LAYER STYLES
FOR CARD ELEMENTS & ICONS



ANIFESTATION CCS
TIPS & TRICKS

LAYOUT

CREATING LAYOUTS SPECIFIC
TO YOUR GAMEPLAY MECHANICS



ANIFESTATION CCS
TIPS & TRICKS

TEXT | FONTS

BRIGHT TEXT OVER
DARK BACKGROUNDS



T

T



ANIFESTATION CCS
TIPS & TRICKS

TEXT | FONTS

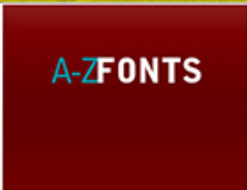
FONT RESOURCES



ANIFESTATION CCS
TIPS & TRICKS

ICONS

BEST POSITIONS FOR ICONS
& SYMBOLS IN CARD DESIGNS





MANIFEST YOUR CREATION

