

DESIGN SERVICES



ANIFESTATION CCS
CARD CREATION SOURCE



A N I F E S T A T I O N C C S

ILLUSTRATIONS



CARD DESIGNS



ICONS



D E S I G N S E R V I C E S

[HTTP://WWW.MANIFESTATIONCCS.COM/DESIGN-SERVICES/](http://www.manifestationccs.com/design-services/)

TABLE OF CONTENTS

CARD DESIGNS.....01

CUSTOM FONT.....09

CONTENT INCLUSION.....13

ICONS.....18

TOKENS.....25

ILLUSTRATIONS.....30

LOGOS.....34

BOOKLETS.....36

BOXES/PACKAGING.....38

TABLE OF CONTENTS

MATS.....40

BOARDS / TILE SHEETS.....42

3D MODELS.....44

PROMOTIONAL GRAPHICS.....46

MOTION GRAPHICS.....48

LANDING PAGES.....50



CARD DESIGN GLOSSARY

FIXED:

A design containing graphic elements that support a single layout.

CONVERTIBLE:

A design containing graphic elements that support multiple layouts.

SINGLE-SIDED:

Designs created for one side of a print and/or digital template.

DOUBLE-SIDED:

Designs created for the front and rear of a print and/or digital template.

MINIMAL:

Designs that take on simple visual themes; usually consisting of flat design elements that lack textures or complex color arrangements (typically the fastest to craft and easiest to modify).

STYLES & EFFECTS:

Designs crafted using high-quality styles, textures and various other effects that enhance the look and feel of a card (depending on the complexity of the card's design, these templates can be crafted within a short or medium time duration – also the most modifiable and flexible of the three card design types due to the nature of their organization and Manifestation CCS' design techniques).

ILLUSTRATED:

Designs created using traditional art skills in the form of digital painting/illustration (depending on the complexity of the card design/concept, illustrated card designs can take short, medium, or longer periods of time to complete; these are also the least modifiable and flexible of the three card design types).

PURCHASE AMOUNTS

OPTIONS:

1. FIXED CARD DESIGNS

- Minimal: \$100 - \$300 | \$150 - \$400 (double-sided)
- Styles & Effects: \$150 - \$500 | \$250 - \$600 (double-sided)
- Illustrated: \$200 - \$700 | \$350 - \$800 (double-sided)

2. CONVERTIBLE CARD DESIGNS

- Minimal: \$200 - \$700 | \$350 - \$800 (double-sided)
- Styles & Effects: \$300 - \$900 | \$550 - \$1,000 (double-sided)
- Illustrated: \$400 - \$1,000 | \$750 - \$1,200 (double-sided)

CARD DESIGN PROCESS

MINIMAL: Fixed Completion Time - 2-4 Days | Convertible Completion Time – 4-12 Days (after card element sketch approval)

STYLES & EFFECTS: Fixed Completion Time - 4-8 Days | Convertible Completion Time - 8-24 Days (after card element sketch approval)

ILLUSTRATED: Fixed Completion Time – 6-12 Days | Convertible Completion Time – 12-36 Days (after card element sketch approval)

1. **DESIGN SERVICE REQUEST**: Send information about your card design project to the Acting Manager through our [CONTACT](#) page in order to receive your card design project's purchase price.
2. **DESIGN SERVICE PURCHASE**: After the Acting Manager has reviewed your design project's information and sent your order's final purchase price, you may purchase the design service on the website. After the purchase, a password protected Project Timeline/Progress Update page will be created for you.
3. **CARD ELEMENT SKETCHES**: Line sketch(es) of a card's front and/or rear will be made by a Featured Designer(s) and submitted to you for approval or modifications.
4. **CARD DESIGN CREATION**: After receiving your approval for the Card Element Sketch(es) the Featured Designer(s) will design your card(s), based on your input, until they are completed and ready for your review.
5. **CLIENT REVIEW (MODIFICATION REQUESTS)**: 3 versions of your card(s) containing example artwork, text, and/or icons will be submitted to you for review. Featured Designers will be able to make changes in the forms of color, minor element shape and position edits, and font size/choice tweaks. Up to 3 modification requests can be made before your Work Order is considered complete.
6. **COMPLETION**: All default and requested files will be sent to you in a .zip file upon completion via email attachment and/or download link.

MINIMAL CARD TEMPLATES

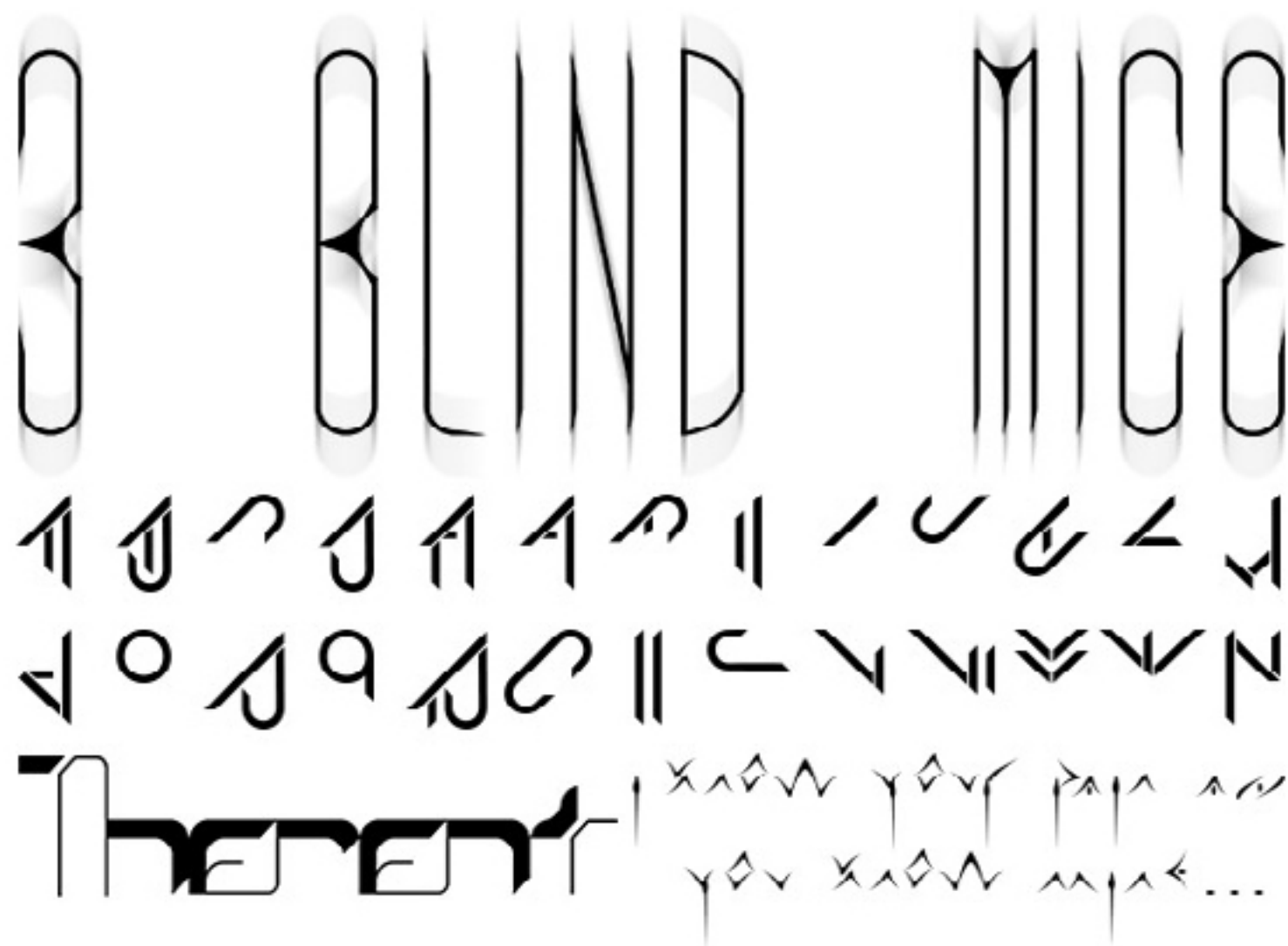




STYLES & EFFECTS CARD TEMPLATES

ILLUSTRATED CARD TEMPLATES





CUSTOM FONT GLOSSARY

ALPHABET:

A set of 40 characters.

PURCHASE AMOUNTS

OPTIONS:

1. \$10 - \$40/Character

CUSTOM FONT PROCESS

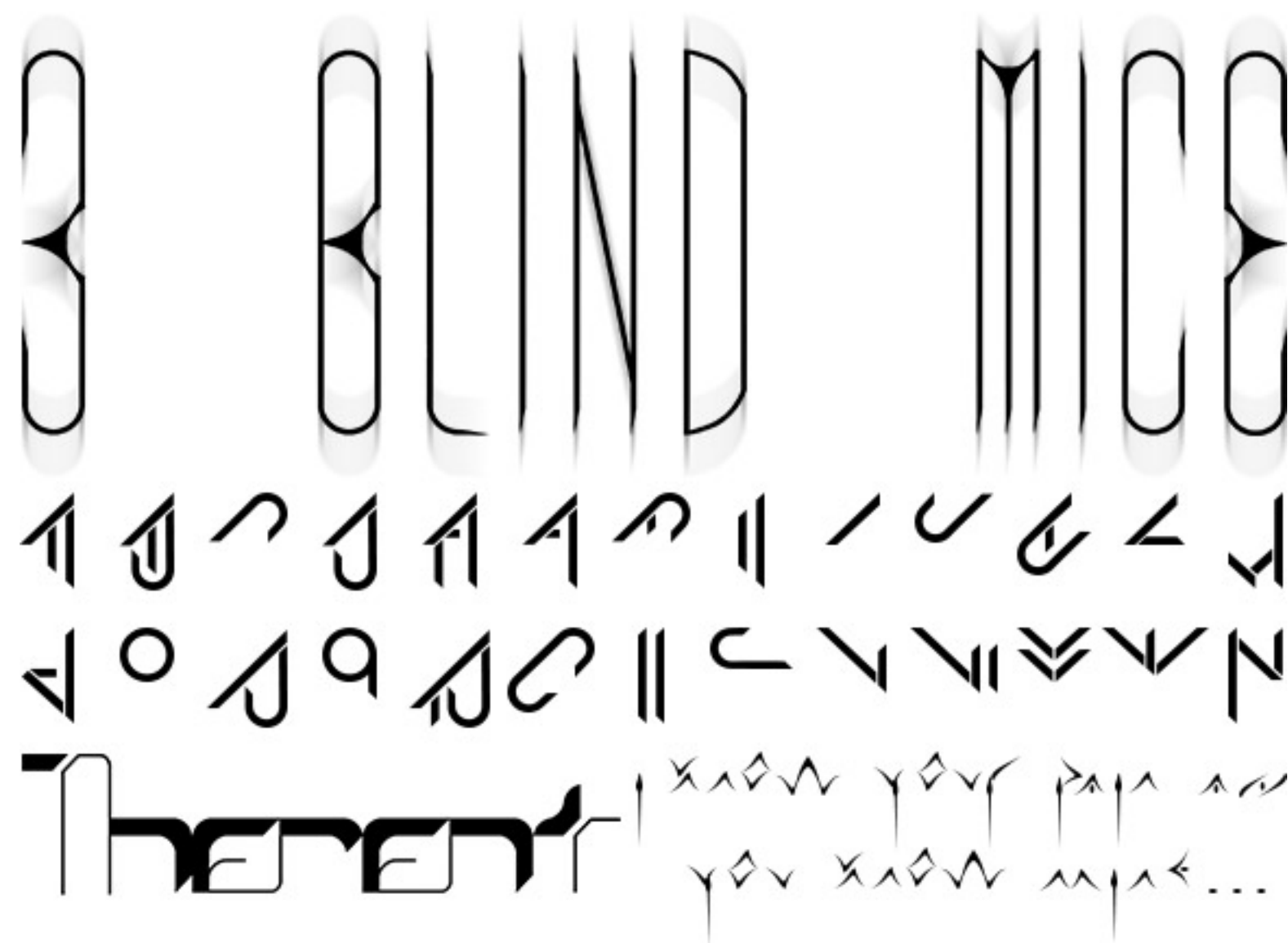
COMPLETION TIME: (Starts after font sketch approval)

– 2-8 Days per Alphabet (after font character sketch approval).

PROCESS STEPS: (Progress updates will be given to clients via progress page online)

1. **DESIGN SERVICE REQUEST:** Send information about your custom font project to the Acting Manager through our [CONTACT](#) page in order to receive your card design project's purchase price.
2. **DESIGN SERVICE PURCHASE:** After the Acting Manager has reviewed your design project's information and sent your order's final purchase price, you may purchase the design service on the website. After the purchase, a password protected Project Timeline/Progress Update page will be created for you.
3. **FONT CHARACTER SKETCHES:** Line sketch(es) of font characters will be made by a Featured Designer(s) and submitted to you for approval or modifications.

4. **CUSTOM FONT CREATION:** After receiving your approval for the Font Character Sketch(es) the Featured Designer(s) will design your font(s), based on your input, until they are completed and ready for your review.
5. **CLIENT REVIEW (MODIFICATION REQUESTS):** 3 examples of all characters in the font being used in ways related to your project, will be submitted for your review. Featured Designers will be able to make changes in the forms of minor element shape and position edits, and font size/choice tweaks. Up to 3 modification requests can be made before your Work Order is considered complete.
6. **COMPLETION:** All default and requested files will be sent to you in a .zip file upon completion via email attachment and/or download link.





CONTENT INCLUSION GLOSSARY

VERSION:

A template whose contents/design elements were defined by one set of data imported from a Data Set.

VARIABLES:

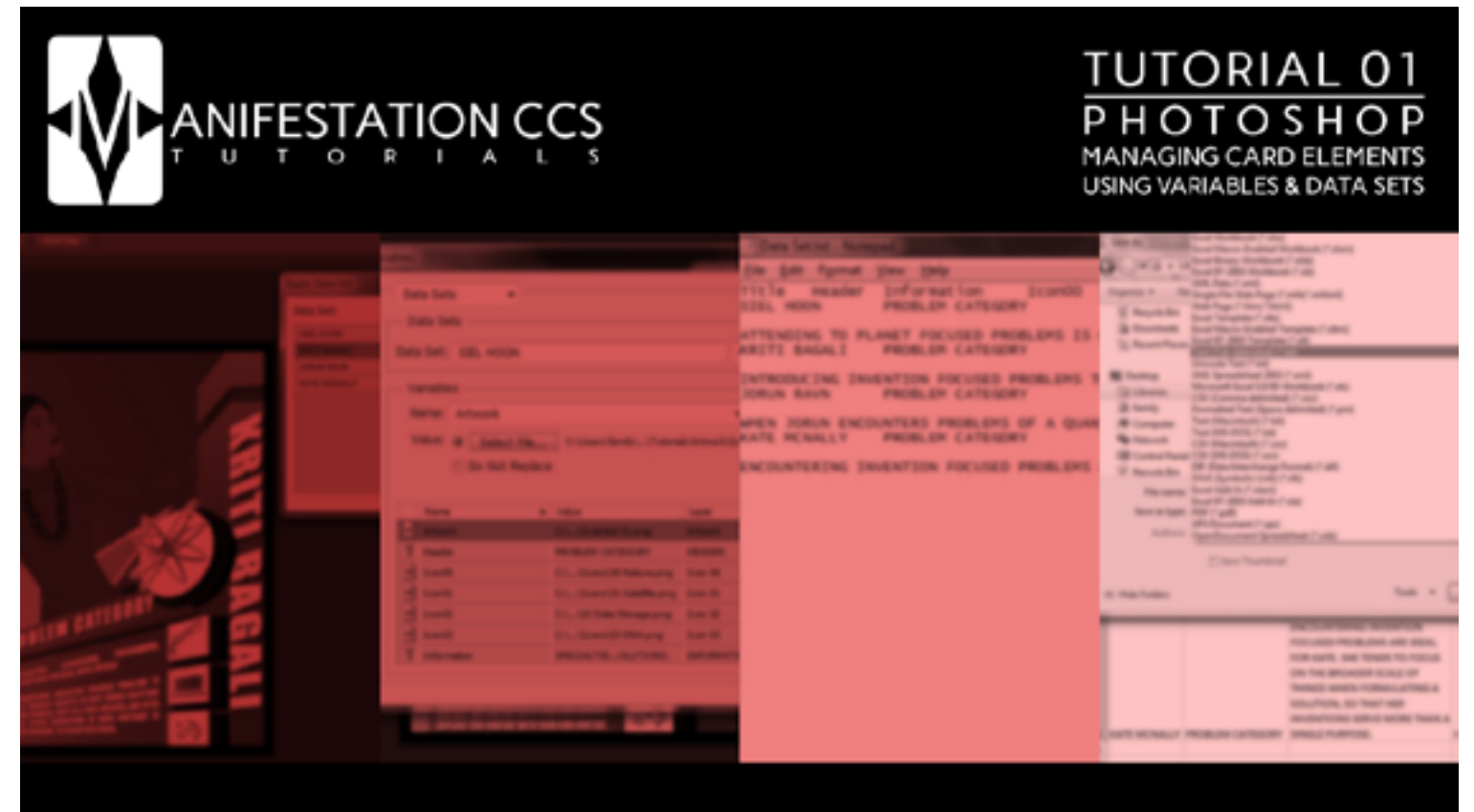
Photoshop Variables are attributes that are linked to layers. These attributes allow Designers to make pre-defined changes to: the visibility of a layer, the pixels/image of a layer, and the text of a layer.

DATA SET:

Data Sets are text files (.txt) that contain data used to update/replace the data found in a card template.

TAB-DELIMITED:

Information in Data Sets is "Tab-Delimited," which means information is separated by (or surrounded by) tab spaces (the same spaces resulting from pressing the "tab" key on a keyboard).



CLICK IMAGE ABOVE TO
DOWNLOAD THE TUTORAL

PURCHASE AMOUNTS

OPTIONS:

1. \$6 - \$24/card face version

CONTENT INCLUSION PROCESS

COMPLETION TIME: (Starts after verification of data versions)

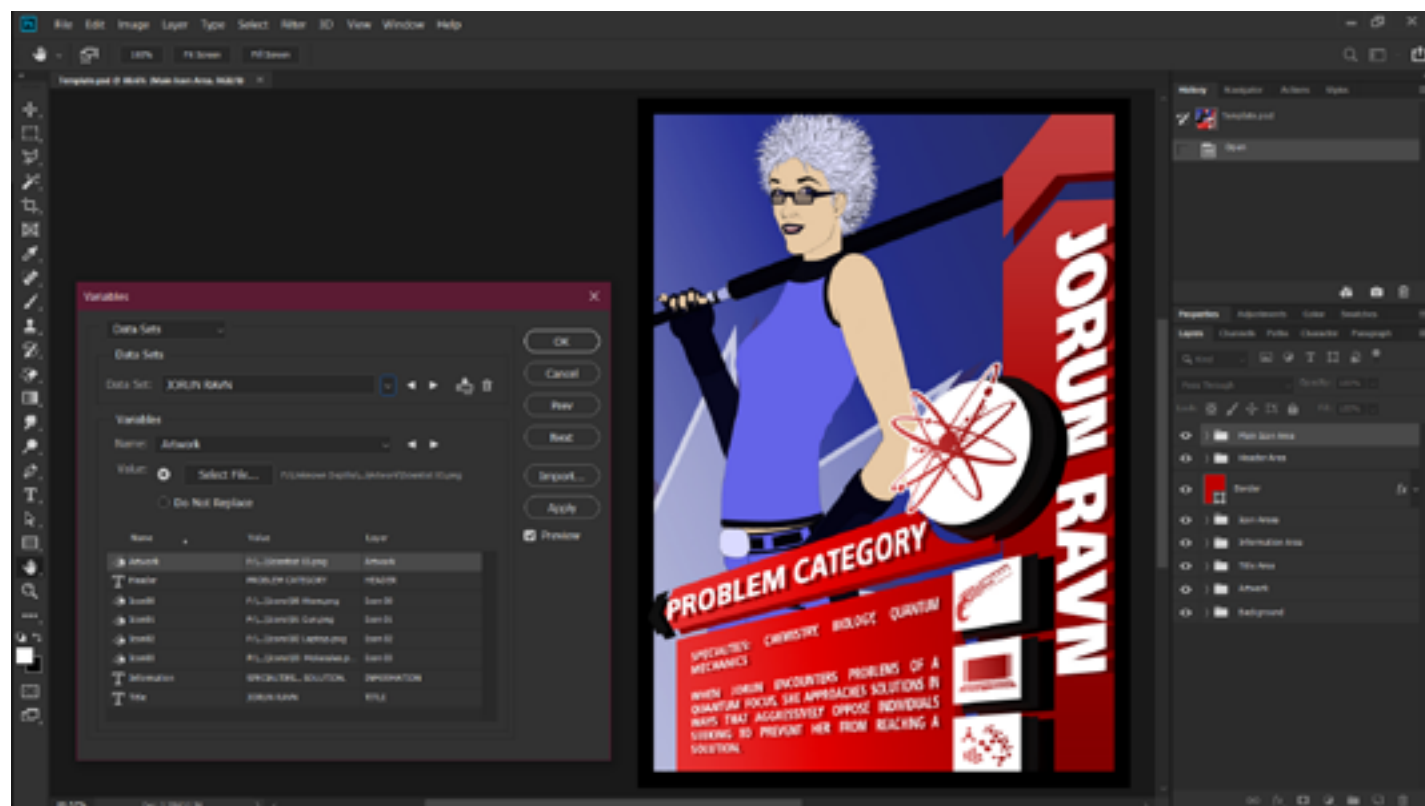
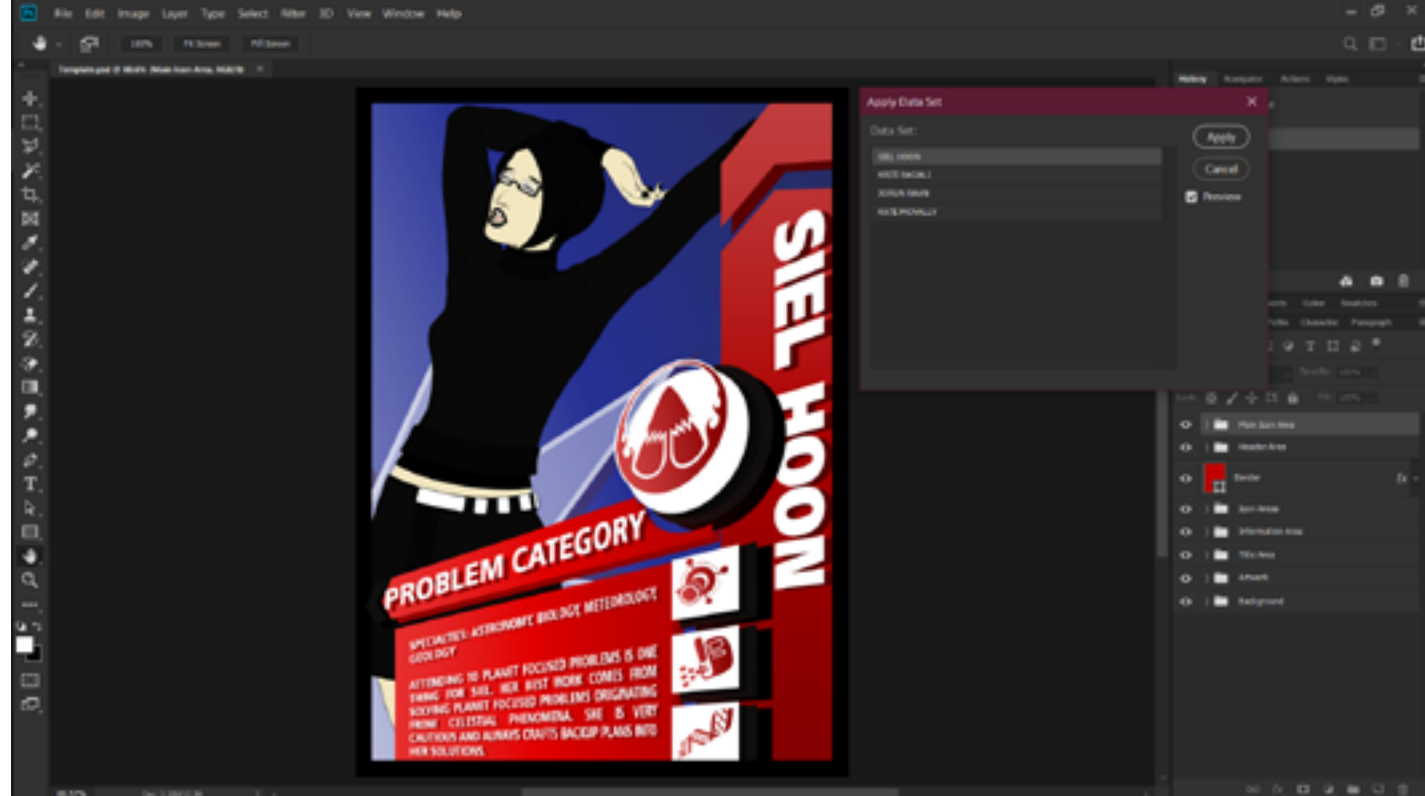
- 1-4 Day(s) per set of 120 card versions.

PROCESS STEPS: (Progress updates will be given to clients via progress page online)

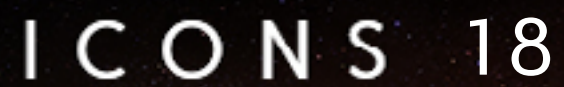
1. **DESIGN SERVICE FORM SUBMISSION:** Send information about the content you would like us to populate your project with to the Acting Manager through our [CONTACT](#) page in order to receive your card design project's purchase price.
2. **DESIGN SERVICE PURCHASE:** After the Acting Manager has reviewed your design project's information and sent your order's final purchase price, you may purchase the design service on the website. After the purchase, a password protected Project Timeline/Progress Update page will be created for you.
3. **CONTENT FILE SUBMISSIONS:** Fill out the File Content List provided on the Project Progress/Update Page. Send all files (card templates, artwork, icons, text and/or spreadsheet files) containing and/or serving as content for the templates you would like multiple versions of, to us through the Project Progress / Update Page.

PROCESS STEPS (CONTINUED):

4. **VERIFICATION OF DATA VERSIONS:** Manifestation CCS will verify that all submitted card templates, artwork, icons, text and/or spreadsheet files have been received and match the File Content list you will provide. Manifestation CCS will also scan through the card version data you supply to make sure all content is present and without flaw. If we suspect any flaws in the data you have supplied we will submit them to you to see if any modifications are necessary; or if the you approve the content as final.
5. **COMPLETION:** All versions of your card deck and/or templates (in .psd and .jpg formats) will be sent to you in a .zip file upon completion via email attachment and/or download link.



KRITI BASALI										
1	Title	Header	Information	Icon00	Icon01	Icon02	Icon03	Artwork		
2	SIEL HOON	PROBLEM CATEGORY	SPECIALTIES: ASTRONOMY, BIOLOGY, METEOROLOGY, GEOLOGY ATTENDING TO PLANET FOCUSED PROBLEMS IS ONE THING FOR SIEL. HER BEST WORK COMES FROM SOLVING PLANET FOCUSED PROBLEMS ORIGINATING FROM CELESTIAL PHENOMENA. SHE IS VERY CAUTIOUS AND ALWAYS CRAFTS BACKUP PLANS INTO HER SOLUTIONS.	Icon000 Nature.png	Icon001 Satellite.png	Icon002 Data Storage.png	Icon003 DNA.png	Artwork/Scientist 01.png		
3	KRITI BASALI	PROBLEM CATEGORY	SPECIALTIES: ENGINEERING, PROGRAMMING, THEORETICAL PHYSICS, META PHYSICS INTRODUCING INVENTION FOCUSED PROBLEMS TO KRITI USUALLY RESULTS IN VERY UNIQUE SOLUTIONS BEING FORMED. KRITI IS A RULE BREAKER, AND OFTEN USES OTHER INVENTIONS IN WAYS CONTRARY TO THEIR DESIGNS, TO REACH HER GOALS.	Icon000 Construct.png	Icon001 Planet.png	Icon002 Hacking.png	Icon003 Embryo.png	Artwork/Scientist 02.png		



ICON DESIGN GLOSSARY

MINIMAL:

Designs that are flat, single color representations of concepts/ideas in vector format. (typically the fastest to craft and easiest to modify).

STYLES & EFFECTS:

Designs that include textures, styles, and effects which further enhance the visual themes of a vector icon's concepts/ideas (depending on the complexity of the icon's design, it can be crafted within a short or medium time duration – also the most modifiable and flexible of the three icon design types due to the nature of their organization and Manifestation CCS' design techniques).

ILLUSTRATED:

Designs created using traditional art skills (like painting and illustrating) through digital media (depending on the complexity of the icon design/concept, illustrated icons can take short, medium, or longer periods of time to complete).

PURCHASE AMOUNTS

OPTIONS:

1. Minimal: \$10 - 40/icon
2. Styles & Effects: \$15 - \$60/icon
3. Illustrated: \$20 - \$80/icon

ICON DESIGN PROCESS

MINIMAL: Completion Time – 2-16 Days per set of 30 icons (after icon sketch approval).

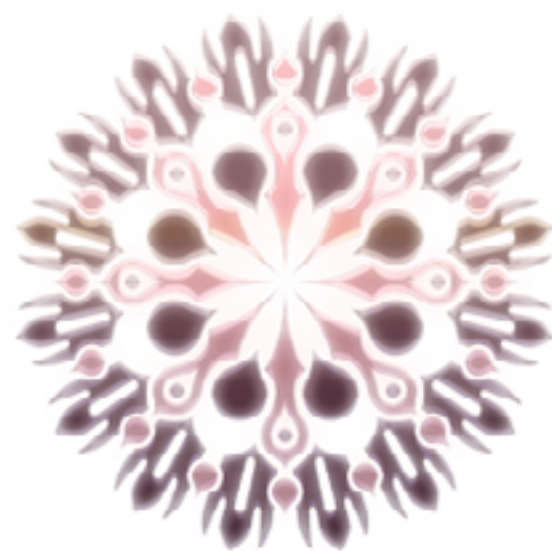
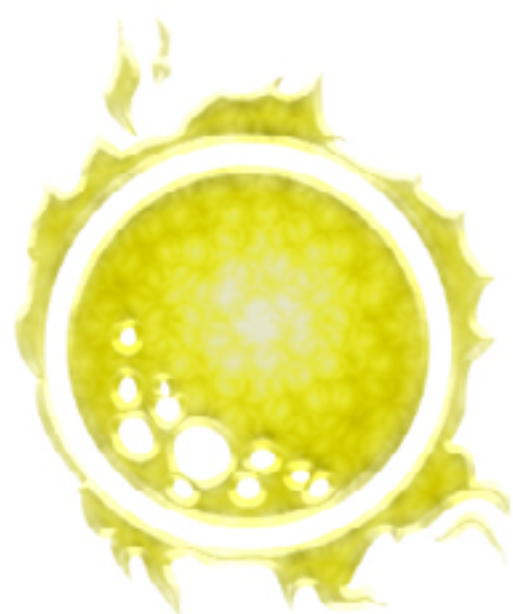
STYLES & EFFECTS: Completion Time – 3-24 Days per set of 30 icons (after icon sketch approval).

ILLUSTRATED: Completion Time – 8-48 Days per set of 30 icons (after icon sketch approval).

1. **DESIGN SERVICE REQUEST**: Send information about your icon design project to the Acting Manager through our [CONTACT](#) page in order to receive your card design project's purchase price.
2. **DESIGN SERVICE PURCHASE**: After the Acting Manager has reviewed your design project's information and sent your order's final purchase price, you may purchase the design service on the website. After the purchase, a password protected Project Timeline/Progress Update page will be created for you.
3. **ICON SKETCHES**: Line sketches based on your requested ideas/concepts will be made by a Featured Designer(s) and submitted to you for approval or modifications.
4. **ICON SET CREATION**: After receiving your approval for the Icon Sketch(es) the Featured Designer(s) will design your icon(s), based on your input, until they are completed and ready for your review.
5. **CLIENT REVIEW (MODIFICATION REQUESTS)**: Your icons will be submitted to you for review. Featured Designers will be able to make changes in the forms of: color, and minor element shape and position edits. Up to 3 modification requests can be made before your Work Order is considered complete.
6. **COMPLETION**: All default and requested files will be sent to you in a .zip file upon completion via email attachment and/or download link.

MINIMAL ICON DESIGN

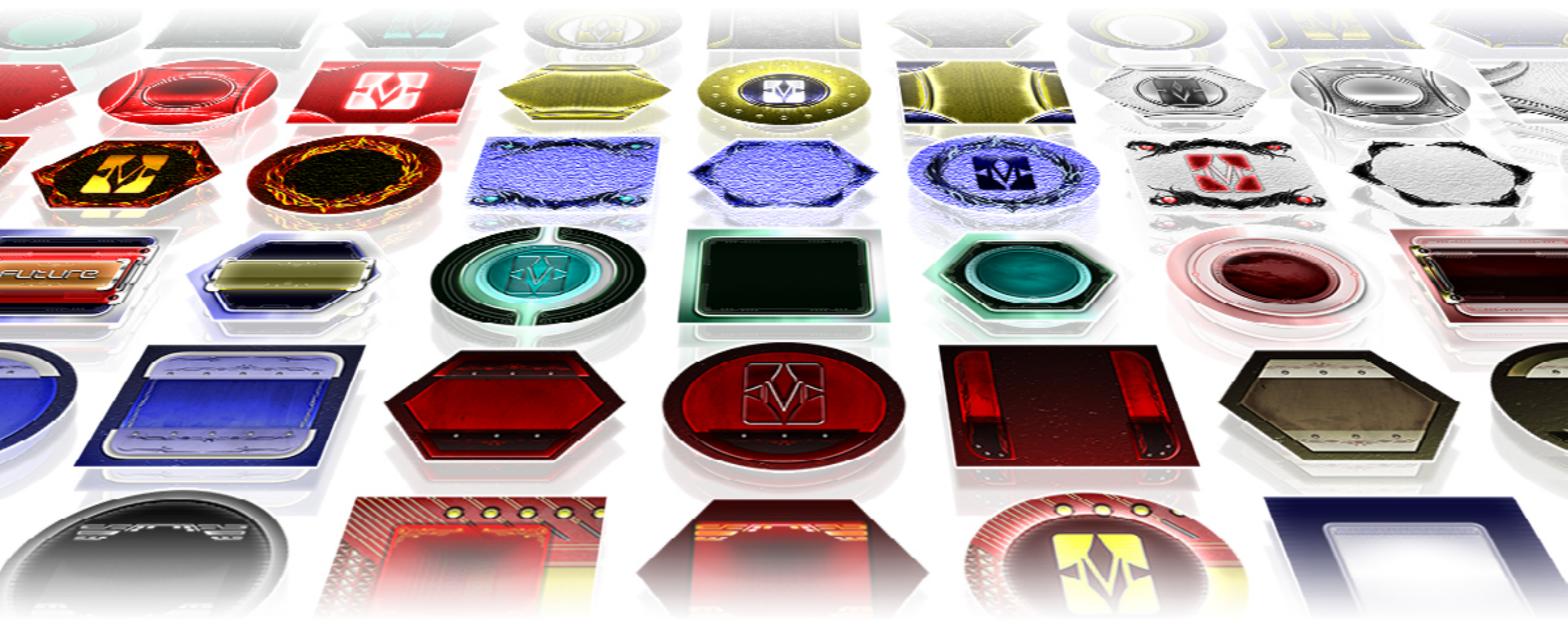




STYLES & EFFECTS ICON DESIGN

ILLUSTRATED ICON DESIGN





TOKEN DESIGN GLOSSARY

FIXED:

A design containing graphic elements that support a single layout.

CONVERTIBLE:

A design containing graphic elements that support multiple layouts.

SINGLE-SIDED:

Designs created for one side of a print and/or digital template.

DOUBLE-SIDED:

Designs created for the front and rear of a print and/or template.

MINIMAL:

Designs that take on simple visual themes; usually consisting of flat design elements that lack textures or complex color arrangements (typically the fastest to craft and easiest to modify).

STYLES & EFFECTS:

Designs crafted using high-quality styles, textures and various other effects that enhance the look and feel of a card (depending on the complexity of the token's design, these templates can be crafted within a short or medium time duration – also the most modifiable and flexible of the three token design types due to the nature of their organization and Manifestation CCS' design techniques).

ILLUSTRATED:

Designs created using traditional art skills in the form of digital painting/illustration (depending on the complexity of the token design/concept, illustrated token designs can take short, medium, or longer periods of time to complete).

PURCHASE AMOUNTS

OPTIONS:

1. FIXED TOKEN DESIGNS

- Minimal: \$60 - \$125 | \$100 - 250 (double-sided)
- Styles & Effects: \$75 - \$375 | \$130 - \$500 (double-sided)
- Illustrated: \$90 - \$625 | \$150 - \$750 (double-sided)

2. CONVERTIBLE TOKEN DESIGNS

- Minimal: \$120 - \$250 | \$200 - \$375 (double-sided)
- Styles & Effects: \$150 - \$500 | \$260 - \$625 (double-sided)
- Illustrated: \$180 - \$750 | \$320 - \$875 (double-sided)

TOKEN DESIGN PROCESS

MINIMAL: Fixed Completion Time - 1-2 Days | Convertible Completion Time – 3-10 Days (after token element sketch approval)

STYLES & EFFECTS: Fixed Completion Time – 1-4 Days | Convertible Completion Time - 6-18 Days (after token element sketch approval)

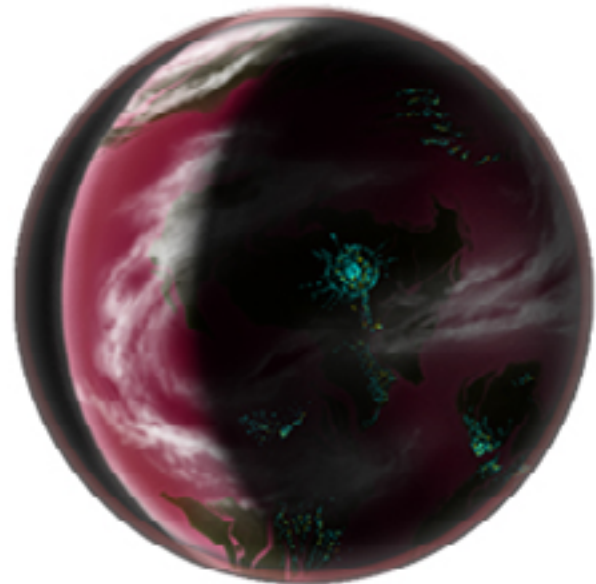
ILLUSTRATED: Fixed Completion Time – 6-12 Days | Convertible Completion Time – 12-36 Days (after card element sketch approval)

1. **DESIGN SERVICE REQUEST**: Send information about your token project to the Acting Manager through our [CONTACT](#) page in order to receive your design project's purchase price.
2. **DESIGN SERVICE PURCHASE**: After the Acting Manager has reviewed your design project's information and sent your order's final purchase price, you may purchase the design service on the website. After the purchase, a password protected Project Timeline/Progress Update page will be created for you.
3. **TOKEN ELEMENT SKETCHES**: Line sketch(es) of a token's front and/or rear will be made by a Featured Designer(s) and submitted to you for approval or modifications.
4. **TOKEN DESIGN CREATION**: After receiving your approval for the Token Element Sketch(es) the Featured Designer(s) will design your token(s), based on your input, until they are completed and ready for your review.
5. **CLIENT REVIEW (MODIFICATION REQUESTS)**: 3 versions of your token(s) containing example artwork, text, and/or icons will be submitted to you for review. Featured Designers will be able to make changes in the forms of color, minor element shape and position edits, and font size/choice tweaks. Up to 3 modification requests can be made before your Work Order is considered complete.
6. **COMPLETION**: All default and requested files will be sent to you in a .zip file upon completion via email attachment and/or download link.



-----MINIMAL

STYLES & EFFECTS---



-----ILLUSTRATED

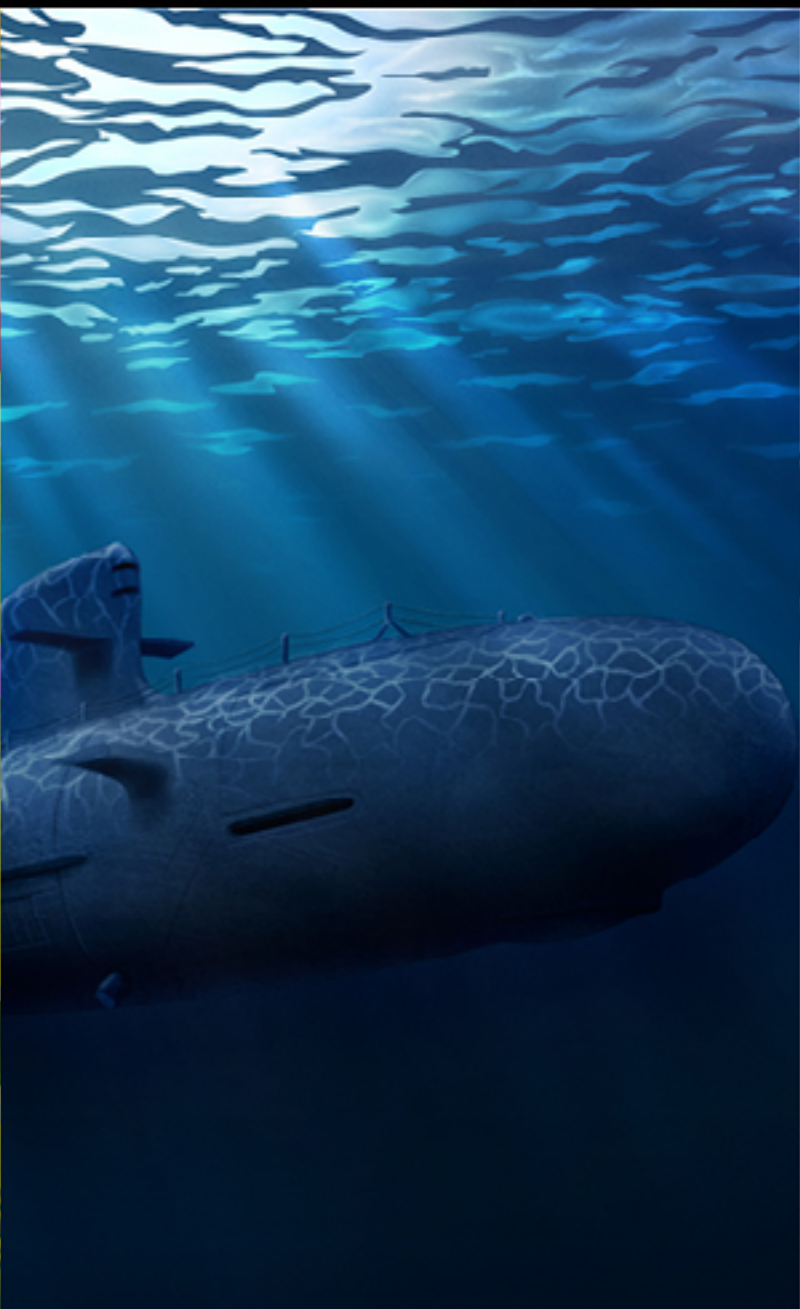


ILLUSTRATION GLOSSARY

FOREGROUND:

A sub-focus of an image composed of any number of elements/items/components (often used to aid in establishing the tone of an illustration's environment).

MIDDLE GROUND:

The main focus of an image composed of any number of elements/items/components (main focus of an illustration).

BACKGROUND:

A sub-focus of an image, covering the entire art area, composed of any number of elements/items/components (used to establish an illustration's environment).

FULL PIECE:

An image that includes a combination of any number foreground, middle ground, and background elements/items/components (composed of a main focus and an environment).

LOW DETAIL:

Illustrations consisting of a low to medium number of elements/items/components; where attention to any style of light/shadow, form, and composition are sacrificed for speed in completing all elements composing an art piece.

MEDIUM DETAIL:

Illustrations consisting of a low to high number of elements/items/components; where attention to any style of light/shadow, form, and composition are important in rendering at least half of the elements composing an art piece.

HIGH DETAIL:

Illustrations consisting of a high to overwhelming number of elements/items/components; where high levels of attention to any style of light/shadow, form, and composition are extremely important in rendering all elements composing an art piece.

PURCHASE AMOUNTS

HIGH DETAIL ILLUSTRATIONS:

1. OPTIONS (SINGLE PIECE)
Foreground: \$150 - \$600
Middle Ground: \$200 - \$800
Background: \$250 - \$1,000
Full Piece: \$300 - \$1,200
2. OPTIONS (COLLECTION)
2-30 Illustrations: \$295 - \$1,180
31-60 Illustrations: \$290 - \$1,160
61-90 Illustrations: \$285 - \$1,140
91-120 Illustrations: \$280 - \$1,120
121-150 Illustrations: \$275 - \$1,100

MEDIUM DETAIL ILLUSTRATIONS:

1. OPTIONS (SINGLE PIECE)
Foreground: \$50 - \$150
Middle Ground: \$100 - \$300
Background: \$150 - \$450
Full Piece: \$200 - \$600
2. OPTIONS (COLLECTION)
2-30 Illustrations: \$195 - \$585
31-60 Illustrations: \$190 - \$570
61-90 Illustrations: \$185 - \$555
91-120 Illustrations: \$180 - \$540
121-150 Illustrations: \$175 - \$525

LOW DETAIL ILLUSTRATIONS:

1. OPTIONS (SINGLE PIECE)
Foreground: \$35 - \$70
Middle Ground: \$50 - \$100
Background: \$100 - \$200
Full Piece: \$150 - \$300
2. OPTIONS (COLLECTION)
2-30 Illustrations: \$145 - \$290
31-60 Illustrations: \$140 - \$280
61-90 Illustrations: \$135 - \$270
91-120 Illustrations: \$130 - \$260
121-150 Illustrations: \$125 - \$250

ILLUSTRATION PROCESS

COMPLETION TIMES: (Start after illustration sketch approval)

FOREGROUND:

[Low Detail](#) - 1-2 Day(s) per Illustration | [Medium Detail](#) - 2-6 Days per Illustration | [High Detail](#) - 3-12 Days per Illustration

MIDDLE GROUND:

[Low Detail](#) - 2-4 Days per Illustration | [Medium Detail](#) - 3-9 Days per 1-3 Illustrations | [High Detail](#) - 4-16 Days per Illustration

BACKGROUND:

[Low Detail](#) - 3-6 Days per Illustration | [Medium Detail](#) - 4-12 Days per Illustration | [High Detail](#) - 5-20 Days per Illustration

FULL PIECE:

[Low Detail](#) - 5-10 Days per Illustration | [Medium Detail](#) - 5-20 Days per Illustration | [High Detail](#) - 5-30 Days per Illustration

PROCESS STEPS: (Progress updates will be given to clients via progress page online)

1. [ILLUSTRATION SERVICE REQUEST](#): Send information about your illustration project to the Acting Manager through our [CONTACT](#) page in order to receive your card design project's purchase price.
2. [ILLUSTRATION SERVICE PURCHASE](#): After the Acting Manager has reviewed your illustration project's information and sent your order's final purchase price, you may purchase the design service on the website. After the purchase, a password protected Project Timeline/Progress Update page will be created for you.
3. [ILLUSTRATION SKETCHES](#): Line sketch(es) of an illustration will be made by a Featured Artist(s) and submitted to you for approval or modifications.
4. [ILLUSTRATION CREATION](#): After receiving your approval for the Illustration Sketch(es) the Featured Artist(s) will work on your illustrations until they are completed and ready for your review.
5. [CLIENT REVIEW \(MODIFICATION REQUESTS\)](#): Featured Artist(s) will submit Completed Illustrations for your review. Requested modifications will be limited to what the Featured Artist(s) feels is possible within the allotted Completion Time. Up to 3 modification requests can be made before your Work Order is considered complete.
6. [COMPLETION](#): All default and requested files will be sent to you in a .zip file upon completion via email attachment and/or download link.



ANIFESTATION CCS
CARD CREATION SOURCE

RECLAIM EARTH

P



ZIA ZOMBIE

EL

GNOME
FEST

MARINE
WUWU
PLAY

LOGO DESIGN INFORMATION

FOR THOSE LOOKING TO EFFECTIVELY BRAND THEIR PROJECTS, MANIFESTATION CCS OFFERS LOGO DESIGN SERVICES. ALL LOGO DESIGNS WE CREATE INCLUDE 3 VERSIONS OF THE LOGO: BLACK & WHITE, MINIMALLY STYLED, AND FULLY RENDERED.

- **PRICE RANGE:** \$300 - \$900 PER LOGO

- **COMPLETION TIME:** 2 – 8 DAYS (DEPENDING ON THE LEVEL OF DETAIL INVOLVED IN THE LOGO)

PROCESS STEPS: (Progress updates will be given to clients via progress page online)

1. **DESIGN SERVICE REQUEST:** Send information about your design project to the Acting Manager through our [CONTACT](#) page in order to receive your design project's purchase price.
2. **DESIGN SERVICE PURCHASE:** After the Acting Manager has reviewed your design project's information and sent your order's final purchase price, you may purchase the design service on the website. After the purchase, a password protected Project Timeline/Progress Update page will be created for you.
3. **LOGO DESIGN SKETCHES:** Line sketch(es) of the logo(s) will be made by a Featured Designer(s) and submitted to you for approval or modifications.
4. **LOGO CREATION:** After receiving your approval for the Logo Sketch(es) the Featured Designer(s) will design 3 versions of your logo(s) (Black & White, Minimally Styled, and Fully Rendered), based on your input, until they are completed and ready for your review.
5. **CLIENT REVIEW (MODIFICATION REQUESTS):** The 3 versions of your logo(s) will be submitted for your review. Featured Designers will be able to make changes in the forms of color, minor element shape and position edits, and font size/choice tweaks. Up to 3 modification requests can be made before your Work Order is considered complete.
6. **COMPLETION:** All default and requested files will be sent to you in a .zip file upon completion via email attachment and/or download link.



ANIFESTATION CCS

CARD CREATION SOURCE

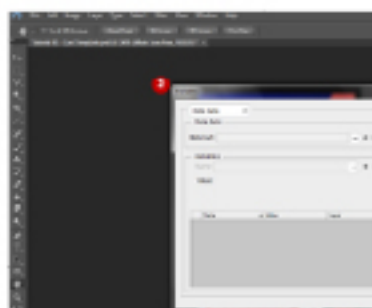
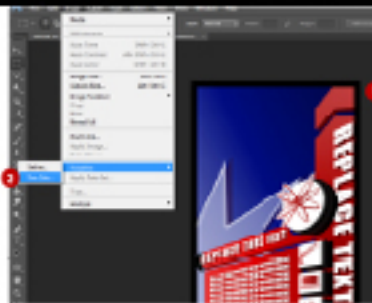
FOCUS 04: IMPORT DATA SETS

Photoshop relies on Tab-Delimited and Comma-Separated text files (.txt) when dealing with Data Sets. Importing .txt Data Set files can save the Photoshop to memory process.

STEPS:

1) To Import a Data Set, open your organized card template containing Defined Variables in Photoshop.

2) Next, go to the "Image" tab, highlight "Variables" and click the "Data Sets" option. This opens the Variables window.



The "Data Sets" section of the Variables window contains the following options:

• "Define" / "Data Sets" drop-down selection

The "Define" selection gives you access to options allowing you to define the properties of layers by assigning variables to them. These variables allow you to control a layer's visibility, replace a layer's text string, or replace a layer's pixels.

The "Data Sets" selection gives you access to pre-defined sets of data used to control the variables assigned to a layer. Options to output different Data Sets, Delete Data Sets, Import Data Sets and edit/organize the Variables attached to a Data Set are available with this selection.

• "Data Set" drop-down selection

Found in the "Data Sets" section of the "Data Sets" options in the Variables window.

This drop-down selection allows you to select the Data Set (row) you would like to apply to the Photoshop card template.

By default the Data Sets are named "Data Set #1" using a sequence of numbers corresponding to the number of Data Sets created. You can change the Data Set name by replacing the name in the "Data Set" text field.

0 | IMPORT DATA SETS STEPS 1-4

CLICK LINK FOR MORE FROM ANIFESTATION CCS




CHANGING ICONS

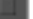


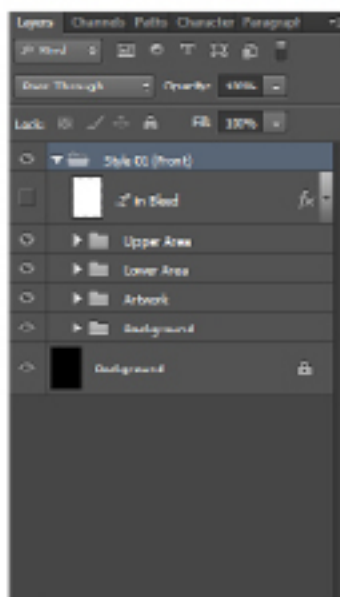
LAYER HIERARCHY 1

CLICKING THE "ARROW" ICON ON THE "STYLE 01 (Front)" LAYER COORDINATE WILL REVEAL THE ORGANIZED CONTENTS OF THIS PHOTOSHOP DOCUMENT.

COLOR SCHEME 01 IS COMPOSED OF 4 MAIN PHOTOSHOP LAYER GROUPS: UPPER AREA, LOWER AREA, ARTWORK, AND BACKGROUND.

CLICK THE  ICON TO HIDE VISIBLE LAYERS AND VICE-VERSA TO ACHIEVE YOUR DESIRED LAYOUT STYLE.

ABOVE THE MAIN LAYER GROUPS IS A HIDDEN LAYER NAMED "2" IN BLEED. MAKING THIS LAYER VISIBLE BY CLICKING THE  ICON WILL REVEAL A THIN BORDER INDICATING THE CARD'S BLEED SPACE. WHEN SAVING CARDS



F C CONTENTS

INSTRUCTIONS 1

ART 6

WORK WITH THE PEN TOOL

1) [Tool Mode: R] Color Picker: 10-11
Pen Tool: 19 [Pen Operations: 18] [Combine Shapes: 18]
Text (Pen Tool): 28 [Pen Operations: 28] [Combine From Shapes: 28]

22W (Shade)
1, 40-44 [Color Picker: 40-44] [Pen Operations: 42] [New Layer: 42]

22W (Tint)
Transform Rn Tool: 51-52, 58 [Color Picker: 52] [Pen Operations: 52]

TOOLS 11

1) Tool: 16-17 [Ellipse Tool: 9, 12-13] [Color Picker: 10-11] [Pen Op-

eration: 100] [40] [Outline: 40-44] [Color Picker: 40-44] [Pen Op-

1) [Pen Selection Tool: 38-39, 44-45, 50-51] [Pen Tool: 50, 58] [G-
1) [Color Picker: 10-11] [Pen Operations: 18, 47] [Combine From Shapes: 28]
1) [Transform Path: 25-27, 42-43, 48-49] [Consolidating / Merging



BOOKLET DESIGN INFORMATION

IF YOUR PROJECT REQUIRES BOOKLETS, OR ANY PAGE LAYOUT DESIGNS, YOU CAN RELY ON MANIFESTATION CCS. WE HAVE ORGANIZED OUR BOOKLET DESIGN SERVICE AROUND SPREADS (A SINGLE SHEET OF 2 PAGES). OUR BOOKLET DESIGN SERVICE INCLUDES FRONT AND REAR COVER DESIGNS, FREE OF CHARGE, FOR ORDERS OF 4 SPREADS OR MORE.

- **PRICE RANGE:** \$250 - \$750 PER SPREAD

- **COMPLETION TIME:** 2 – 16 DAYS PER SPREAD (DEPENDING ON THE LEVEL OF DETAIL INVOLVED IN THE PAGE DESIGNS)

- ALL PAGES / SPREADS CREATED WILL BE FASHIONED AS TEMPLATES. THESE TEMPLATE PAGES / SPREADS WILL INCLUDE CONTENT PROVIDED BY THE CLIENT.

- CLIENTS THAT WOULD LIKE TO USE ANY PAGE / SPREAD TEMPLATE DESIGNS AS SOURCES FOR CREATING EXTRA PAGES (CONTAINING ADDITIONAL CONTENT) SHOULD ADD CONTENT INCLUSION SERVICES TO THEIR ORDERS.

- LOGOS ARE CONSIDERED CONTENT AND WILL NOT BE CREATED AS AN ELEMENT OF ANY SPREAD / PAGE DESIGN. LOGOS MUST BE ORDERED SEPARATELY.

- ILLUSTRATION DETAIL LIMITS WILL APPLY TO SPREAD / PAGE DESIGNS NEEDING HIGH DETAIL ILLUSTRATIONS.

PROCESS STEPS: (Progress updates will be given to clients via progress page online)

1. **DESIGN SERVICE REQUEST:** Send information about your design project to the Acting Manager through our [CONTACT](#) page in order to receive your design project's purchase price.
2. **DESIGN SERVICE PURCHASE:** After the Acting Manager has reviewed your design project's information and sent your order's final purchase price, you may purchase the design service on the website. After the purchase, a password protected Project Timeline/Progress Update page will be created for you.
3. **PAGE SPREAD DESIGN SKETCHES:** Line sketch(es) of the page spreads) will be made by a Featured Designer(s) and submitted to you for approval or modifications.
4. **PAGE SPREAD CREATION:** After receiving your approval for the Page Spread(s) the Featured Designer(s) will design your page spread(s), based on your input, until they are completed and ready for your review.
5. **CLIENT REVIEW (MODIFICATION REQUESTS):** Completed page spread(s) containing artwork, text, and/or icons (provided by the client) will be submitted to you for review. Featured Designers will be able to make changes in the forms of color, minor element shape and position edits, and font size/choice tweaks. Up to 3 modification requests can be made before your Work Order is considered complete.
6. **COMPLETION:** All default and requested files will be sent to you in a .zip file upon completion via email attachment and/or download link.



ANIFESTATION CCS
CARD CREATION SOURCE



BOXES | PACKAGING 38

BOXES/PACKAGING DESIGN INFORMATION

MANIFESTATION CCS HAS CREATED BOX / PACKAGING DESIGN SERVICES FOR PROJECTS REQUIRING BOXES AND / OR PACKAGING. ANY FACE INVOLVED ON A SINGLE BOX / PACKAGE TEMPLATE SHEET WILL BE DESIGNED BY MANIFESTATION CCS.

- **PRICE RANGE:** \$250 - \$750 PER BOX / PACKAGE TEMPLATE SHEET
- **COMPLETION TIME:** 2 – 16 DAYS (DEPENDING ON THE LEVEL OF DETAIL INVOLVED IN THE BOX / PACKAGE DESIGN)
- ALL BOX / PACKAGE TEMPLATE SHEETS WILL BE FASHIONED AS TEMPLATES. THESE TEMPLATE SHEETS WILL INCLUDE CONTENT PROVIDED BY THE CLIENT.
- CLIENTS THAT WOULD LIKE TO USE ANY BOX / PACKAGE TEMPLATE DESIGNS AS SOURCES FOR CREATING EXTRA BOXES (CONTAINING ADDITIONAL CONTENT) SHOULD ADD CONTENT INCLUSION SERVICES TO THEIR ORDERS.
- LOGOS ARE CONSIDERED CONTENT AND WILL NOT BE CREATED AS AN ELEMENT OF ANY BOX / PACKAGE TEMPLATE SHEET. LOGOS MUST BE ORDERED SEPARATELY.
- ILLUSTRATION DETAIL LIMITS WILL APPLY TO BOX / PACKAGE DESIGNS NEEDING HIGH DETAIL ILLUSTRATIONS.

PROCESS STEPS: (Progress updates will be given to clients via progress page online)

1. **DESIGN SERVICE REQUEST:** Send information about your design project to the Acting Manager through our [CONTACT](#) page in order to receive your design project's purchase price.
2. **DESIGN SERVICE PURCHASE:** After the Acting Manager has reviewed your design project's information and sent your order's final purchase price, you may purchase the design service on the website. After the purchase, a password protected Project Timeline/Progress Update page will be created for you.
3. **BOX/PACKAGE SHEET DESIGN SKETCHES:** Line sketch(es) of the package(s) will be made by a Featured Designer(s) and submitted to you for approval or modifications.
4. **BOX/PACKAGE SHEET CREATION:** After receiving your approval for the Box/Package Sheet Sketch(es) the Featured Designer(s) will design your Box/Package Sheet(s), based on your input, until they are completed and ready for your review.
5. **CLIENT REVIEW (MODIFICATION REQUESTS):** The Box/Package Sheet(s) will be submitted for your review. Featured Designers will be able to make changes in the forms of color, minor element shape and position edits, and font size/choice tweaks. Up to 3 modification requests can be made before your Work Order is considered complete.
6. **COMPLETION:** All default and requested files will be sent to you in a .zip file upon completion via email attachment and/or download link.



MAT DESIGN INFORMATION

SHOULD YOUR CARD OR BOARD GAME PROJECTS REQUIRE MAT DESIGNS, MANIFESTATION CCS WOULD LIKE TO ASSIST IN THEIR CREATION.

- **PRICE RANGE:** \$180 – \$540 PER MAT (DEPENDING ON SELECTED OPTIONS)
- **COMPLETION TIME:** 2 – 16 DAYS (DEPENDING ON THE LEVEL OF DETAIL INVOLVED IN THE MAT DESIGN)
- ALL MAT DESIGNS WILL BE CRAFTED AS TEMPLATES. ANY CONTENT PROVIDED BY THE CLIENT TO BE INCLUDED IN THE MAT DESIGN WILL BE POPULATED INTO THE MAT TEMPLATE.
- CLIENTS THAT WOULD LIKE TO USE ANY MAT TEMPLATE DESIGN AS A SOURCE FOR CREATING EXTRA MATS (CONTAINING ADDITIONAL CONTENT) SHOULD ADD CONTENT INCLUSION SERVICES TO THEIR ORDERS.
- LOGOS ARE CONSIDERED CONTENT AND WILL NOT BE CREATED AS AN ELEMENT OF ANY MAT DESIGN. LOGOS MUST BE ORDERED SEPARATELY.
- ILLUSTRATION DETAIL LIMITS WILL APPLY TO MAT DESIGNS NEEDING HIGH DETAIL ILLUSTRATIONS.

PROCESS STEPS: (Progress updates will be given to clients via progress page online)

1. **DESIGN SERVICE REQUEST:** Send information about your design project to the Acting Manager through our [CONTACT](#) page in order to receive your design project's purchase price.
2. **DESIGN SERVICE PURCHASE:** After the Acting Manager has reviewed your design project's information and sent your order's final purchase price, you may purchase the design service on the website. After the purchase, a password protected Project Timeline/Progress Update page will be created for you.
3. **MAT DESIGN SKETCHES:** Line sketch(es) of the mat(s) will be made by a Featured Designer(s) and submitted to you for approval or modifications.
4. **MAT DESIGN CREATION:** After receiving your approval for the mat design sketch(es) the Featured Designer(s) will design your mat(s), based on your input, until they are completed and ready for your review.
5. **CLIENT REVIEW (MODIFICATION REQUESTS):** The completed mat design(s) will be submitted for your review. Featured Designers will be able to make changes in the forms of color, minor element shape and position edits, and font size/choice tweaks. Up to 3 modification requests can be made before your Work Order is considered complete.
6. **COMPLETION:** All default and requested files will be sent to you in a .zip file upon completion via email attachment and/or download link.



BOARD/TILE SHEET DESIGN INFORMATION

PROJECT CREATORS THAT NEED BOARD AND/OR TILE DESIGNS FOR THEIR CREATIONS CAN HAVE THEIR DESIGNS REALIZED THROUGH MANIFESTATION CCS' BOARD | TILE DESIGN SERVICE.

- **PRICE RANGE:** \$300 - \$900 PER BOARD OR TILE SHEET
- **COMPLETION TIME:** 3 – 18 DAYS (DEPENDING ON THE LEVEL OF DETAIL INVOLVED IN THE BOARD OR TILE SHEET DESIGNS)
- **SINGLE BASE IMAGE TILE SHEETS** ARE CREATED BY DESIGNING A BASE IMAGE (ILLUSTRATION AND / OR DESIGN MAINTAINING A CERTAIN AESTHETIC) UPON WHICH TILE OUTLINES / GUIDES WILL BE PLACED OVER TO SEPARATE THE TILES INVOLVED.
- **MULTIPLE BASE IMAGE TILE SHEETS** ARE CREATED BY DESIGNING UP TO 9 BASE IMAGES (ILLUSTRATIONS AND / OR DESIGNS COMPOSED OF DIFFERENT AESTHETICS) AND ARE LIMITED TO 9 TILES.

PROCESS STEPS: (Progress updates will be given to clients via progress page online)

1. **DESIGN SERVICE REQUEST:** Send information about your design project to the Acting Manager through our [CONTACT](#) page in order to receive your design project's purchase price.
2. **DESIGN SERVICE PURCHASE:** After the Acting Manager has reviewed your design project's information and sent your order's final purchase price, you may purchase the design service on the website. After the purchase, a password protected Project Timeline/Progress Update page will be created for you.
3. **BOARD/TILE SHEET SKETCHES:** Line sketch(es) of the board/tile sheet(s) will be made by a Featured Designer(s) and submitted to you for approval or modifications.
4. **BOARD/TILE SHEET CREATION:** After receiving your approval for the board/tile sheet(s) the Featured Designer(s) will design ythe board/tile sheet(s), based on your input, until they are completed and ready for your review.
5. **CLIENT REVIEW (MODIFICATION REQUESTS):** The board/tile sheet(s) will be submitted for your review. Featured Designers will be able to make changes in the forms of color, minor element shape and position edits, and font size/choice tweaks. Up to 3 modification requests can be made before your Work Order is considered complete.
6. **COMPLETION:** All default and requested files will be sent to you in a .zip file upon completion via email attachment and/or download link.



ANIFESTATION CCS
CARD CREATION SOURCE

3D MODEL DESIGN INFORMATION

PROJECTS REQUIRING THE CREATION OF 3D MODELS CAN TURN TO MANIFESTATION CCS FOR SOLUTIONS. THIS DESIGN SERVICE IS IDEAL FOR THOSE IN NEED OF 3D MODELS FOR 3D PRINTING OF MINIATURES, 3D PROPS AND / OR CHARACTERS FOR ILLUSTRATIONS, OR 3D MODELS FOR JUST ABOUT ANY OTHER KIND OF PROJECT.

- **PRICE RANGE:** \$200 – \$1,500 PER 3D MODEL (DEPENDING ON SELECTED OPTIONS)
- **COMPLETION TIME:** 6 – 24 DAYS (DEPENDING ON THE LEVEL OF DETAIL INVOLVED IN THE 3D MODEL)
- WE PROVIDE THREE LEVELS OF DETAIL FOR THE MODELS WE SCULPT: **LOW**, **MEDIUM**, AND **HIGH**.
 - **LOW DETAIL:** 3D MODELS CONSISTING OF A LOW TO MEDIUM NUMBER OF ELEMENTS/ITEMS/COMPONENTS
 - **MEDIUM DETAIL:** 3D MODELS CONSISTING OF A LOW TO HIGH NUMBER OF ELEMENTS/ITEMS/COMPONENTS
 - **HIGH DETAIL:** 3D MODELS CONSISTING OF A HIGH TO OVERWHELMING NUMBER OF ELEMENTS / ITEMS / COMPONENTS

PROCESS STEPS: (Progress updates will be given to clients via progress page online)

1. **DESIGN SERVICE REQUEST:** Send information about your design project to the Acting Manager through our [CONTACT](#) page in order to receive your design project's purchase price.
2. **DESIGN SERVICE PURCHASE:** After the Acting Manager has reviewed your design project's information and sent your order's final purchase price, you may purchase the design service on the website. After the purchase, a password protected Project Timeline/Progress Update page will be created for you.
3. **3D MODEL SKETCHES:** Line sketch(es) of the 3D model(s) (6 turnarounds) will be made by a Featured Artist(s) and submitted to you for approval or modifications.
4. **3D MODEL CREATION:** After receiving your approval for the 3D model sketch(es) the Featured Artist(s) will design the 3D model(s), based on your input, until it/they are completed and ready for your review.
5. **CLIENT REVIEW (MODIFICATION REQUESTS):** The 3D model(s) will be submitted for your review. Requested modifications will be limited to what the Featured Artist(s) feels is possible within the allotted Completion Time. Up to 3 modification requests can be made before your Work Order is considered complete.
6. **COMPLETION:** All default and requested files will be sent to you in a .zip file upon completion via email attachment and/or download link.



ANIFESTATION CCS
CARD CREATION SOURCE



AHH...

REFRESHING 



PROMOTIONAL GRAPHICS DESIGN INFORMATION

MANIFESTATION CCS' PROMOTIONAL GRAPHICS DESIGN SERVICE WAS CREATED FOR INDIVIDUALS LOOKING TO HAVE MARKETING COLLATERAL CREATED FOR THEIR PROJECTS. THIS DESIGN SERVICE COVERS THE CREATION OF ALL TYPES OF MARKETING COLLATERAL – RANGING FROM WEB BANNER SETS TO PRINT FLYERS, POSTERS, CROWD FUNDING PROMOTIONAL GRAPHICS, SOCIAL MEDIA GRAPHICS, AND MORE.

- **PRICE RANGE:** \$250 - \$750 PER PROMOTIONAL GRAPHIC

- **COMPLETION TIME:** 2 – 16 DAYS (DEPENDING ON THE LEVEL OF DETAIL INVOLVED IN THE GRAPHIC'S DESIGN)

- A SINGLE (1) PROMOTIONAL GRAPHIC DESIGN PURCHASE COVERS THE COST OF UP TO THREE (3) WEB BANNERS, SOCIAL MEDIA GRAPHICS, AND / OR CROWD FUNDING HEADER / FOOTER GRAPHICS.

PROCESS STEPS: (Progress updates will be given to clients via progress page online)

1. **DESIGN SERVICE REQUEST:** Send information about your design project to the Acting Manager through our [CONTACT](#) page in order to receive your design project's purchase price.
2. **DESIGN SERVICE PURCHASE:** After the Acting Manager has reviewed your design project's information and sent your order's final purchase price, you may purchase the design service on the website. After the purchase, a password protected Project Timeline/Progress Update page will be created for you.
3. **PROMO GRAPHICS SKETCHES:** Line sketch(es) of the promo graphic(s) will be made by a Featured Designer(s) and submitted to you for approval or modifications.
4. **PROMO GRAPHICS CREATION:** After receiving your approval for the promo graphics Sketch(es) the Featured Designer(s) will design the promo graphics, based on your input, until it/they are completed and ready for your review.
5. **CLIENT REVIEW (MODIFICATION REQUESTS):** All promo graphic(s) will be submitted for your review. Featured Designers will be able to make changes in the forms of color, minor element shape and position edits, and font size/choice tweaks. Up to 3 modification requests can be made before your Work Order is considered complete.
6. **COMPLETION:** All default and requested files will be sent to you in a .zip file upon completion via email attachment and/or download link.



MOTION GRAPHICS DESIGN INFORMATION

VIDEO IS ONE OF THE MOST IMPACTING FORMS OF COMMUNICATION THAT EXIST. FOR PROJECTS IN NEED OF PRESENTING INFORMATION THROUGH MOTION GRAPHICS AND ANIMATION, MANIFESTATION CCS OFFERS MOTION GRAPHIC DESIGN SERVICES.

- **PRICE RANGE:** \$500 – \$6,000 PER MINUTE OF ANIMATION (DEPENDING ON SELECTED OPTIONS)

- **COMPLETION TIME:** 2 WEEKS – 2 MONTHS PER MINUTE OF ANIMATION (DEPENDING ON THE LEVEL OF DETAIL INVOLVED IN THE ANIMATION, GRAPHICS, AND / OR ILLUSTRATIONS)

- WE'VE ORGANIZED OUR MOTION GRAPHIC SERVICE AROUND 3 LEVELS OF MOTION GRAPHIC / ANIMATION COMPLEXITY.

- **LOW COMPLEXITY:** DESIGNED TO EFFECTIVELY PRESENT INFORMATION USING SIMPLE ANIMATIONS AND TECHNIQUES INVOLVING VISUALS AND SOUNDS.

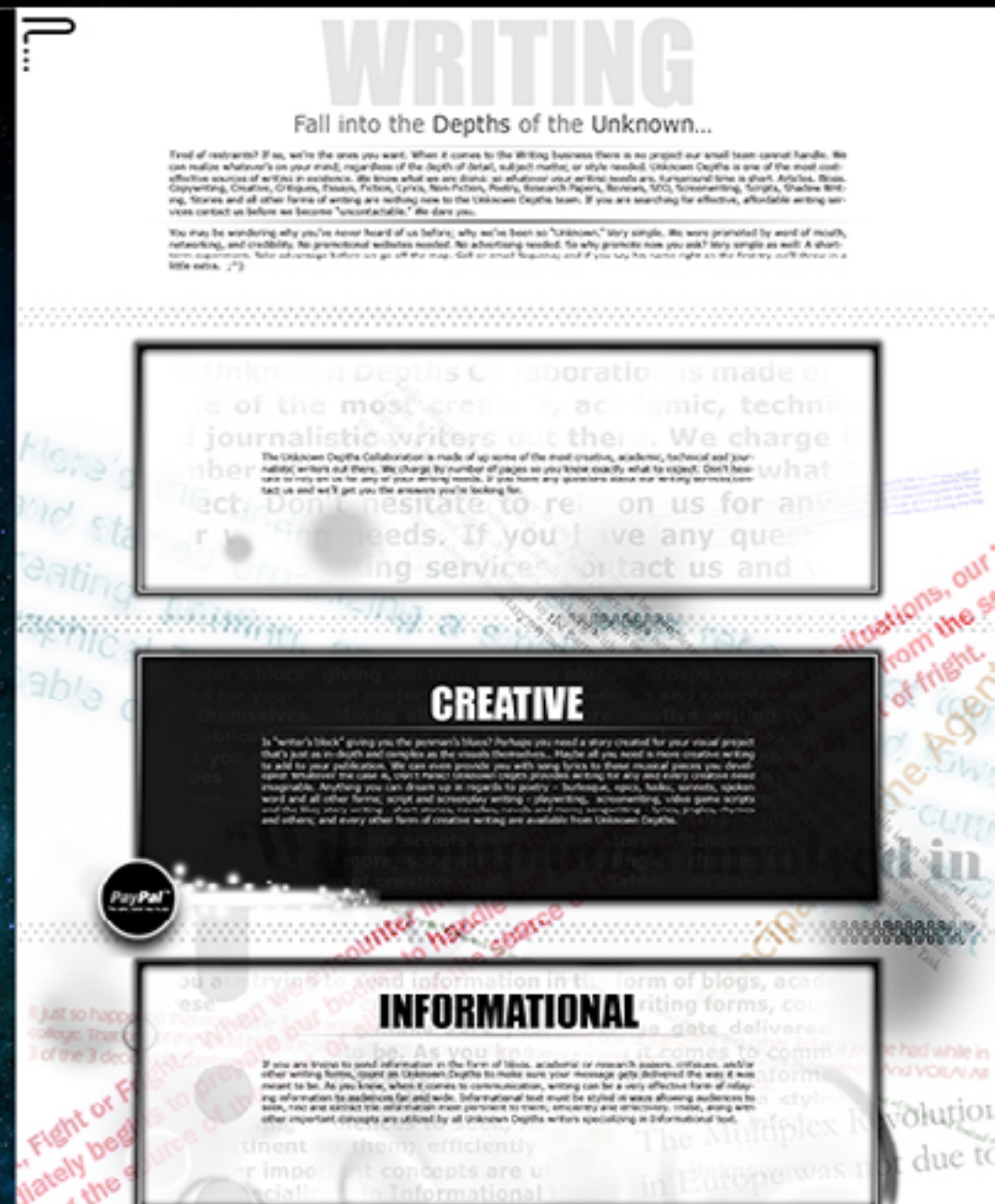
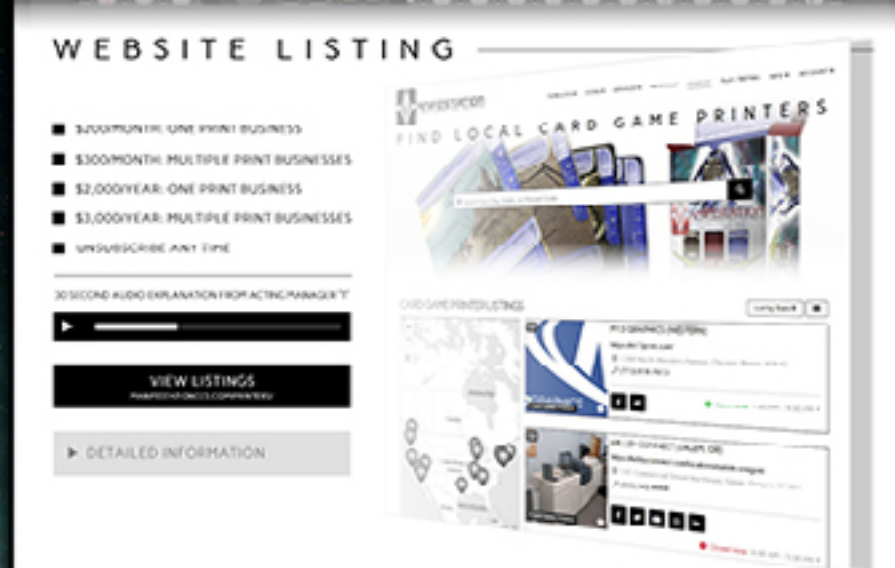
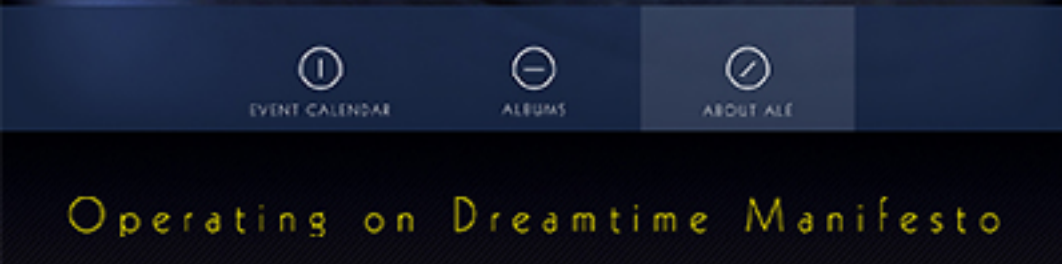
- **MEDIUM COMPLEXITY:** EFFECTIVELY PRESENT INFORMATION THROUGH DETAILED ANIMATIONS AND TECHNIQUES INVOLVING VISUALS AND SOUNDS.

- **HIGH COMPLEXITY:** EFFECTIVELY PRESENT INFORMATION THROUGH HIGH QUALITY ANIMATIONS AND TECHNIQUES INVOLVING VISUALS, FULL ANIMATION, AND SOUNDS.

- THE CREATION OF ORIGINAL MUSIC AND SOUND EFFECTS FOR ANY MOTION GRAPHICS PROJECT WILL NOT BE PROVIDED BY MANIFESTATION CCS. THESE WILL BE CONSIDERED CONTENT TO BE PROVIDED BY THE CLIENT. RECOMMENDED SOURCES OF SOUNDS AND MUSIC WILL BE PROVIDED.

PROCESS STEPS: (Progress updates will be given to clients via progress page online)

1. **DESIGN SERVICE REQUEST:** Send information about your design project to the Acting Manager through our [CONTACT](#) page in order to receive your design project's purchase price.
2. **DESIGN SERVICE PURCHASE:** After the Acting Manager has reviewed your design project's information and sent your order's final purchase price, you may purchase the design service on the website. After the purchase, a password protected Project Timeline/Progress Update page will be created for you.
3. **MOTION GRAPHICS STORYBOARD:** A storyboard(s) of the motion graphic(s) will be made by a Featured Designer(s) and submitted to you for approval or modifications.
4. **MOTION GRAPHICS CREATION:** After receiving your storyboard approval, Featured Designer(s) will begin designing the motion graphics video(s) based on your input, until they are completed and ready for your review.
5. **CLIENT REVIEW (MODIFICATION REQUESTS):** The motion graphics video(s) will be submitted for your review. Requested modifications will be limited to what the Featured Artist(s)/Designer(s) feels is possible within the allotted Completion Time. Up to 1 modification requests can be made before your Work Order is considered complete.
6. **COMPLETION:** All default and requested files will be sent to you in a .zip file upon completion via email attachment and/or download link.



LANDING PAGE DESIGN INFORMATION

CREATE YOUR PROJECT'S WEB PRESENCE THROUGH MANIFESTATION CCS' LANDING PAGE DESIGN SERVICE. WE'LL CRAFT A HIGH-QUALITY LANDING PAGE TO PROMOTE ANY ASPECT OF YOUR PROJECT.

- **PRICE RANGE:** \$250 - \$750 PER LANDING PAGE

- **COMPLETION TIME:** 2 – 28 DAYS (DEPENDING ON THE AMOUNT OF CONTENT INCLUDED AND LEVEL OF DETAIL INVOLVED IN REQUIRED GRAPHIC DESIGN.

- ALL LANDING PAGE DESIGNS WILL BE CRAFTED AS TEMPLATES. ANY CONTENT PROVIDED BY THE CLIENT TO BE INCLUDED IN THE LANDING PAGE DESIGN WILL BE POPULATED INTO THE LANDING PAGE TEMPLATE, AND BE CONSIDERED DEFAULT CONTENT.

- CLIENTS THAT WOULD LIKE TO USE ANY LANDING PAGE TEMPLATE DESIGN AS A SOURCE FOR CREATING EXTRA LANDING PAGES (CONTAINING ADDITIONAL CONTENT) SHOULD ADD CONTENT INCLUSION SERVICES TO THEIR ORDERS.

- LOGOS ARE CONSIDERED CONTENT AND WILL NOT BE CREATED AS AN ELEMENT OF ANY LANDING PAGE DESIGN. LOGOS MUST BE ORDERED SEPARATELY.

- ILLUSTRATION DETAIL LIMITS WILL APPLY TO LANDING PAGE DESIGNS NEEDING HIGH DETAIL ILLUSTRATIONS.

PROCESS STEPS: (Progress updates will be given to clients via progress page online)

1. **DESIGN SERVICE REQUEST:** Send information about your design project to the Acting Manager through our [CONTACT](#) page in order to receive your design project's purchase price.
2. **DESIGN SERVICE PURCHASE:** After the Acting Manager has reviewed your design project's information and sent your order's final purchase price, you may purchase the design service on the website. After the purchase, a password protected Project Timeline/Progress Update page will be created for you.
3. **LANDING PAGE SKETCHES:** Line sketch(es) and functionality notes of the landing page(s) will be made by a Featured Designer(s) and submitted to you for approval or modifications.
4. **LANDING PAGE CREATION:** After receiving your approval for the landing page Sketch(es) our Featured Designer(s) will design the landing page(s), based on your input, until it/they are completed and ready for your review.
5. **CLIENT REVIEW (MODIFICATION REQUESTS):** Completed landing page(s) containing artwork, text, and/or icons (provided by the client) will be submitted to you for review. Featured Designers will be able to make changes in the forms of color, minor element shape and position edits, and font size/choice tweaks. Up to 3 modification requests can be made before your Work Order is considered complete.
6. **COMPLETION:** All default and requested files will be sent to you in a .zip file upon completion via email attachment and/or download link.



ANIFESTATION CCS

DESIGN SERVICE CLIENT AGREEMENT

The following details the agreements made between Manifestation CCS/Unknown Depths and its Design Service Clients regarding the works/creations designed/created by Manifestation CCS Featured Artists & Designers for Design Service Clients:

1. Design Service Clients agree to assume and maintain full ownership rights to final works/creations designed/created by Manifestation CCS upon completion of said final works/creations. Unknown Depths/Manifestation CCS hold no ownership rights to final works/creations designed/created for Design Service Clients.
2. Manifestation CCS/Unknown Depths maintain full and undisputed abilities and rights to host, display, and/or show rasterized, flattened, no-layer containing, non-editable versions of works/creations designed/created for Design Service Clients, for the purpose of promoting and verifying Manifestation CCS'/Unknown Depths' completed works/creations, design abilities, and Design Services.
3. Manifestation CCS/Unknown Depths maintain full and undisputed abilities and rights to privately and indefinitely host/store original, process, and final work/creation files and information designed/created by Manifestation CCS Featured Artists & Designers and/or Unknown Depths Creatives for Design Service Clients.



UNKNOWN DEPTHS

Find local printers for your card projects.



MANIFESTATION

CARD GAME PRINTERS

<https://manifestationccs.com/printers/>

PRINT BUSINESSES | PLAY-TESTING SPOTS | CARD GAME TEMPLATES



ANIFESTATION

PLAY-TESTING SPOTS

PLAY-TEST YOUR GAMES AT BOARD GAME STORES, COFFEE SHOPS, BOOK STORES, PASTRY SHOPS & MORE!
[HTTPS://WWW.MANIFESTATIONCCS.COM/PLAY-TESTING/](https://www.manifestationccs.com/play-testing/)

SUPPORT LOCAL BUSINESSES



MANIFEST YOUR CREATION



UNKNOWN DEPTHS